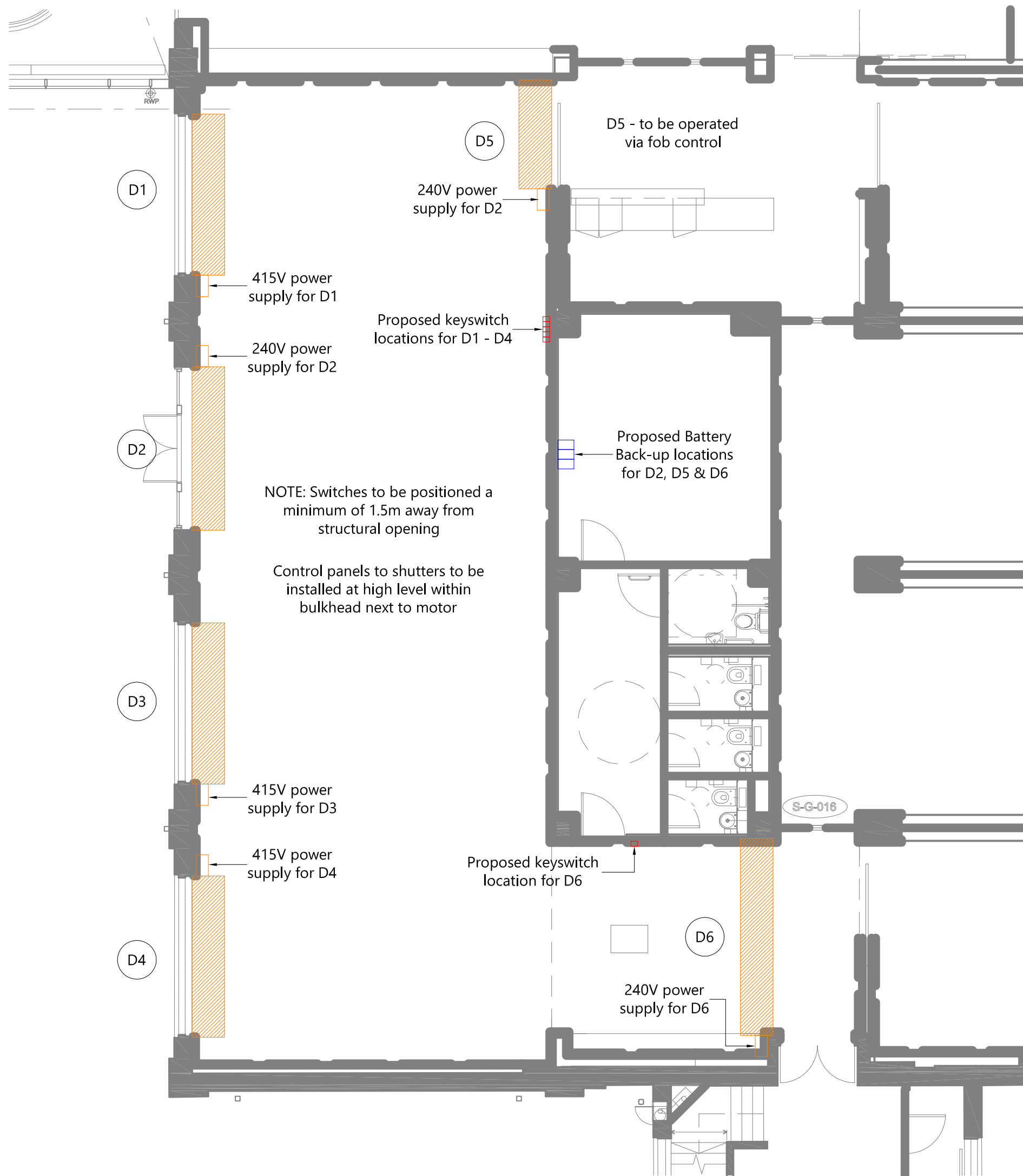


Revision	Description	Date
A	Initial Issue	15/09/2016
-	-	-
-	-	-



NOTE: Cabling and connection of cables to be by others

NOTE: positioning and installation of switches to be by others

NOTE: For cable types, please refer to wiring diagrams

NOTE: Shutters must only be operated when line of sight is achieved

NOTE: All power supply to be by others and provide prior to charter attendance

OBEXION

SPECIALIST SECURITY SHUTTER SYSTEMS

Charter Global Ltd - Innovation House

Boulton Road - Reading - RG2 0NH

T 0845 050 8705 - F 0845 050 8707

www.obexionshutters.com

obexion@charter-global.com

Project:
Hull University

Drawing Title:
*Obexion*TM
180C security shutter
Security Rating 4
Shutter Location Plan

Drawing Type:
Working Drawing

Scale(s):
NTS @ A3

Date:
15/09/2016

Drawn By:
LM

Checked By:
BM

Approved By:
RH

Project No:
CH 6603

Drawing No:
250 B