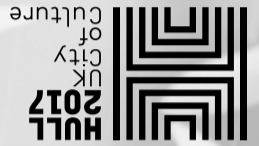


8 AUG - 15 OCT

Princes Quay Shopping Centre

CLAIRE MORGAN

ELEPHANT IN THE ROOM



With thanks to Princes Quay Shopping Centre and Realm Ltd for their cooperation in the development and realisation of this commission.

Claire Morgan is represented worldwide by Galerie Karsten Greve, Cologne, Paris, St. Moritz

On 12 Sep there will be a BSL Interpreted tour at 12pm.

On 14 Sep there will be a Touch Tour at 12pm.

Meeting point for both tours outside of Hull City Hall.

www.claire-morgan.co.uk
hull2017.co.uk/lookup
#Hull2017

Artist Claire Morgan	Rigging & Lighting Agility Events
Studio & Install Assistants Sharon Ayre, Tom Hembra, Nicola Flint, Oonagh Hegarty, Lottie Smith, Hope Stebbing	Princes Quay Sarah Smith Marketing & Customer Services Manager
	Look Up Curators Hazel Colquhoun Andrew Knight

WITH THANKS TO OUR FUNDING PARTNERS:

HOST CITY PRINCIPAL PARTNERS



MAJOR PARTNERS



Claire Morgan says, "With my installations, I hope to create things that provoke thought, wonder and something of the impossible or the unknown."

In this work, suspended from its tail, the whale points downwards towards the water of Princes Dock which flows beneath the shopping centre. With references to Hull's past there is something incongruous, almost disturbing, in seeing this whale as a transient presence in the centre. Pollution means that their future is uncertain. The impact of global warming and increasing the recovered since the end of commercial whaling of Bowheads, and although their numbers have heavy commercial hunting depleted populations not too dangerous and floated when it was dead. 'Right' whale was so called because it was classed as the right whale to catch being slow, whaling vessels were based here. The greenland largest whaling fleet in the country, over 60 of 13 - 16m. In the 1820s Hull was home to the Bowhead whale), which grows to an adult length of 13 - 16m. In the 1820s Hull was home to the Greenland Right whale (a historical name for the 'Elephant in the Room' was modelled on the precision she, and her assistants, spent months meticulously making this work for Hull. life-size form of a whale, has been made from thousands of fragments of torn paper, suspended on nylon threads. With obsessive from thousands of fragments of torn paper, precision she, and her assistants, spent months meticulously making this work for Hull. Claire Morgan's sculpture, based on the life-size form of a whale, has been made from thousands of fragments of torn paper, suspended on nylon threads. With obsessive precision she, and her assistants, spent months meticulously making this work for Hull.

A theme I constantly come back to is time: the passing of time and how it shapes our lives as we try to control it and halt it."

Claire Morgan engages with the impact which human activity has on the earth's life, finding new ways to remind people of the beauty and fragility of the world around us. She reminds us that, "Out of sight means out of mind, and we can more or less experience the world through a device, purchasing things that have been grown, killed, or manufactured cheaply in places we will never visit, by people we will never meet, all the while signing online petitions for ethical treatment of humans and animals in order to absolve ourselves of any guilt. It's a system that offers just enough value, just enough separation, and more than enough convenience to keep our concerns at the very back of our minds".

'Elephant in the Room' consists of 12,000 fragments of hand torn paper, arranged across 4,270 individual threads over 109 layers. The sculpture, 16.5m high, uses over 14 kms of nylon thread. Claire Morgan was born in Belfast, Northern Ireland, and currently lives and works in Gateshead in the North East of England. Claire exhibits internationally, with solo exhibitions in museums and galleries across Europe, and works included in museum shows in the US and Australia.

