

WHERE DO WE GO FROM HERE?

UK City of Culture Hull 2017

Progress Report Stage 3-5

Jason Bruges Studio

Progress Report

The installation consists of 4 sites, Beverley Gate, Trinity Square, Museums Quarter and Wilberforce as per planning submitted on the 10th October.

The sites will have the following models and quantities installed;

Beverley gate,	6x IRB 6600
Trinity Square	9x IRB 6600
Museums Quarter	5x IRB 6400
Wilberforce House	1x IRB 2400

Making the total number of robots to be installed 21 at any time. The remaining 4 robots are kept as spares, making to total amount of robots available 25.

Spares; 1x IRB 2400, 2x IRB 6600, 1x IRB 6400

The decision to keep spares was made to ensure we can replace any faulty robots during the live period if necessary and thereby not compromise the composition of the general artwork.

In the original scheme design, the structures were based on smaller robots. Changing them to larger robots has resulted in additional structure and power. The increased size and weight made it necessary to group the robots in no less three for Beverley Gate and Trinity Square square. Doing this made it possible to house all control within the plinths and adapt the layouts to suit the spaces. 3 robots are kept spare, so a full setup can be replaced if needed. The only single robot plinth remains at Wilberforce House where the robot is considerably smaller.

Planning was submitted on the 10th of October and valid from the 11th October. The documents and changes to the layout was done in collaboration and with advice from Chris Clay, Niccy Hallifax and Doug Jennings to accommodate feedback from stakeholders.

JBS will look at potentially having the spare IRB 2400 positioned in one of the closed off staiths, as a non moving feature and teaser for the larger installations at Museums Quarter.

Hull2017 is looking into access, and power for potential additional lights, along High Street and Market Place tower. This is yet to be confirmed and will depend upon coordination with general install schedule.



Test Rig 1, Robotraders



Artist Impression, Museum Quarters, daytime

Budget and Contracts

JBS looked at the option of converting the robots to single phase with Robotraders as requested by Hull 2017. Due to budget and time constraints this was ruled out as an option. As there was no clear solution when planning was submitted it was decided to incorporate generators to avoid losing further time. This resulted in an additional cost power cost of £32.500 as the original provision for power was £20.000 against the actual cost of £52.500. JBS has agreed to take on the extra scope as per additional contract to be agreed with Hull2017.

JBS has also agreed to take on the additional scope of the sound to ensure this becomes an integrated part of the artwork. The Hull2017 budget allowance for this was £18.000. The total cost of this has been £33.000. Including £27.000 to cover a PA systems at all sites and a sound designer cost of £6000.

As The White Wall will be providing fencing during install, the Hull2017 allowance of £3000 will be included in the additional contract.

JBS are awaiting Hull2017 to provide the new contract for the additional sums as soon as possible.

Throughout stages 3-5 JBS has incurred an overall additional cost of £88.000 on power, sound and fencing. This has been largely the result of increasing of overall scope. Hull2017 has agreed to share the allocated budget of £41.000. This has resulted in an overall overspend of £47.000 that JBS are currently absorbing. JBS would be grateful for any assistance from Hull 2017 on this overspend.

Production and Fabrication

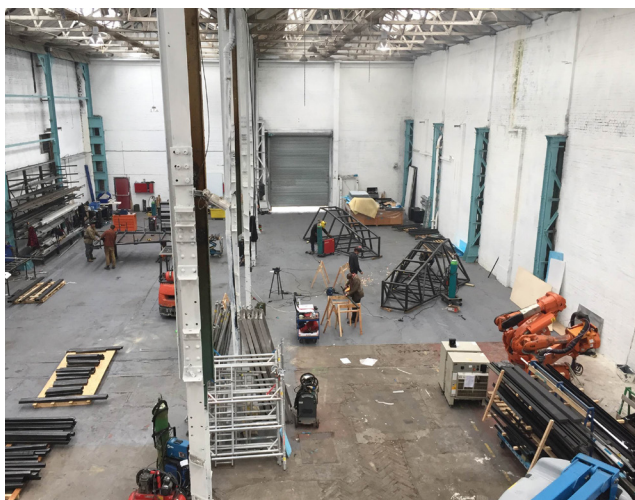
All structural parts have been ordered from the contractors outlined in the roles and responsibilities, and is going proceeding as planned according to the production schedule.

The structures will be checked by Jason Bruges Studio before going on site to foresee any adjustments or potential issues for the install.

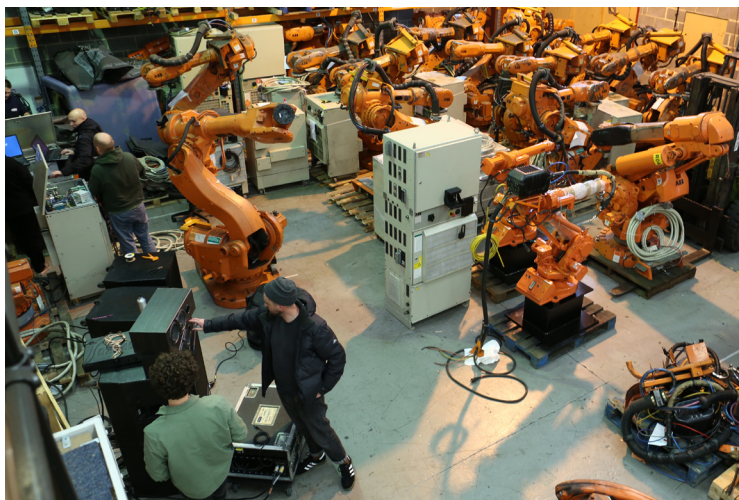
The structural part of the installations have been ratified by Structural Workshop. JBS has been advised on limitations to the content to mitigate risk, however this should not affect the creative outcome.

The plinths are all painted steel structures, clad with perforated steel mesh with 35% transparency 8mm holes.

All robots are second hand refurbished ABB industrial robots. Robotraders are responsible for delivery and maintenance. The finish of the robots will be cleaned, but not repainted as it suits the general creative and story of the robots having served time in production.



Fabrication, The White Wall



Robot tech test, Test rig multiples, Robotraders

Install

The production team has meet with all contractors on site to agree methods and logistics.

Each contractor will be submitting first draft RAMS end of wc.30th October for review prior to install to allow time to adjust.

Amendments to be agreed wc.6th November.

Partners / added capacity

To deliver the project the studio has added capacity to the team in relation to the integration of robots, sound and light.

JBS has also appointed Common Industries to look after the studio's interest in the general publicity of the piece. Common Industries is working on press contacts across various media in close collaboration with Hull 2017s Marketing team and Corner Shop to make sure we are aligned with the general strategy from Hull 2017.

Common Industries are currently waiting for an update and briefing on the marketing strategy.

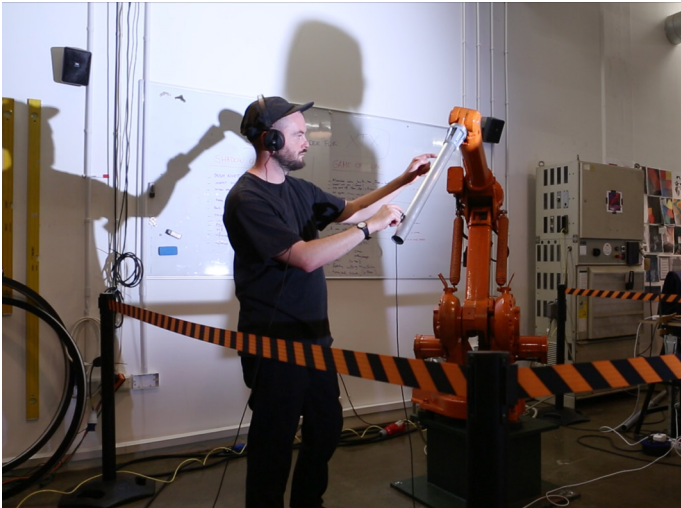
JBS has also been in conversation with James Medcraft to document the installation.

Robotraders / Robots integration

Joe Reeves / Sound design and production

Carlos Valente / Light design and production

Common Industries / PR



Sound Test, Joe Reeves



Light Test, Carlos Valente



JBS, Press Visual

Next steps

Production

wc. 30th October / Contract agreement, additional scope, Sound, Power, Fencing
- Date for setup review to be agreed.

wc. 6th November / Setup Review at The White Wall

wc. 6th November / Commence Installation, mobilisation

wc. 13th November / First structures to be installed on site, final schedule to be confirmed wc. 30th October

wc. 20th November / Content adjustment on site

Press and Opening;

30th November / Press launch

1st December / Opening

See CPM for further detail.

Supporting Documents

Planning / 10th October

- DAS
- Design report
- Installation Visuals and Artist Bio
- Structural Engineering Report
- Layouts and Elevations
- Specifications

Roles and Responsibilities / 19th October

- CDM Notes

CPM

- HCC_FP_REV_D (Schedule as shared on agreement of contract)
- Hull_2017_build_up (live version shared 23rd October)

Jason Bruges Studio

Netil House

1 Netil Lane London

E8 3RL

+44 (0)20 7490 4590

www.jasonbruges.com