

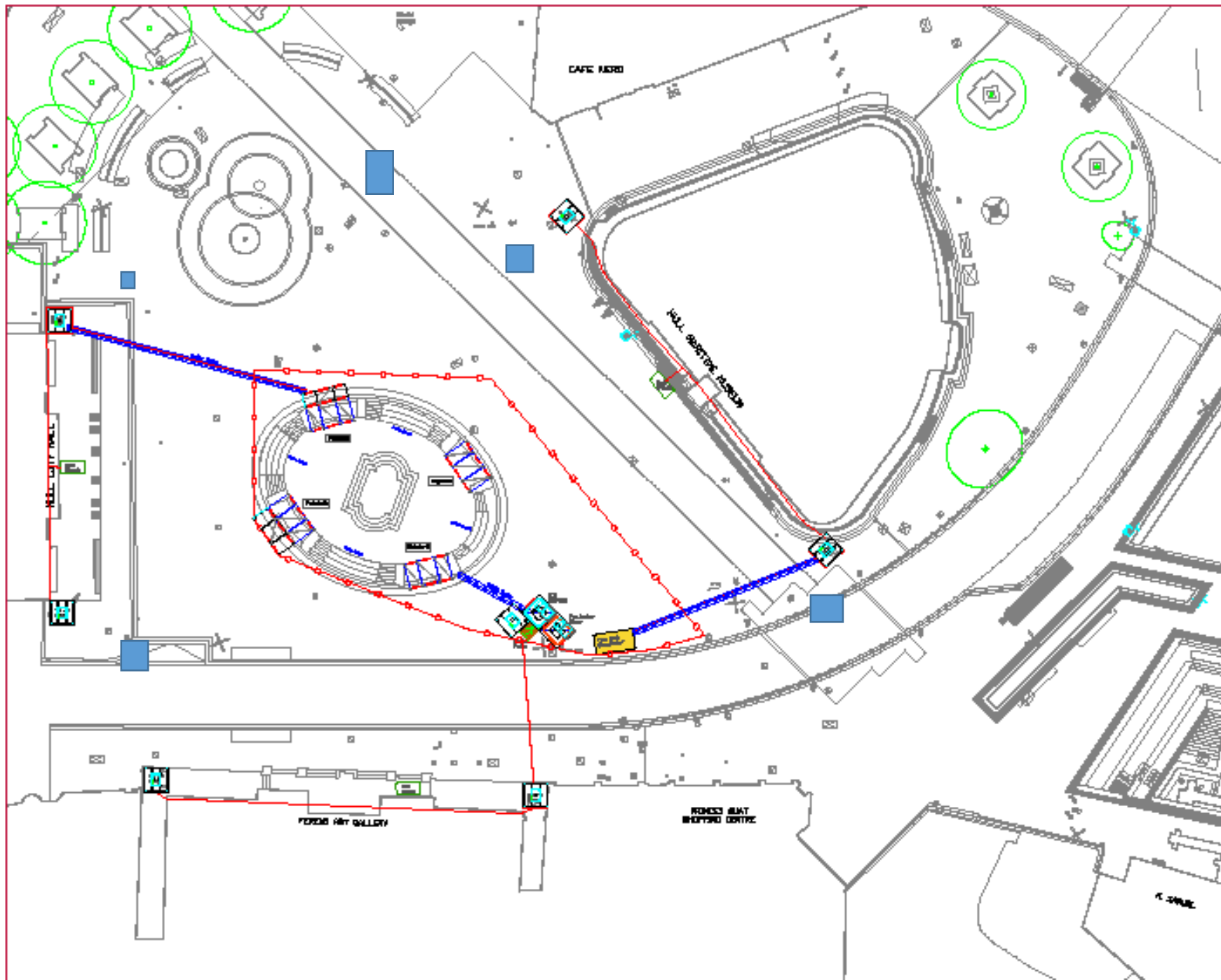
Ushers dot matrix

Draft 1 – Please note on Whitfriar gate it should be 3 persons:

1x H Samuels

1x Telstar

1x Herons .



GENERAL NOTES

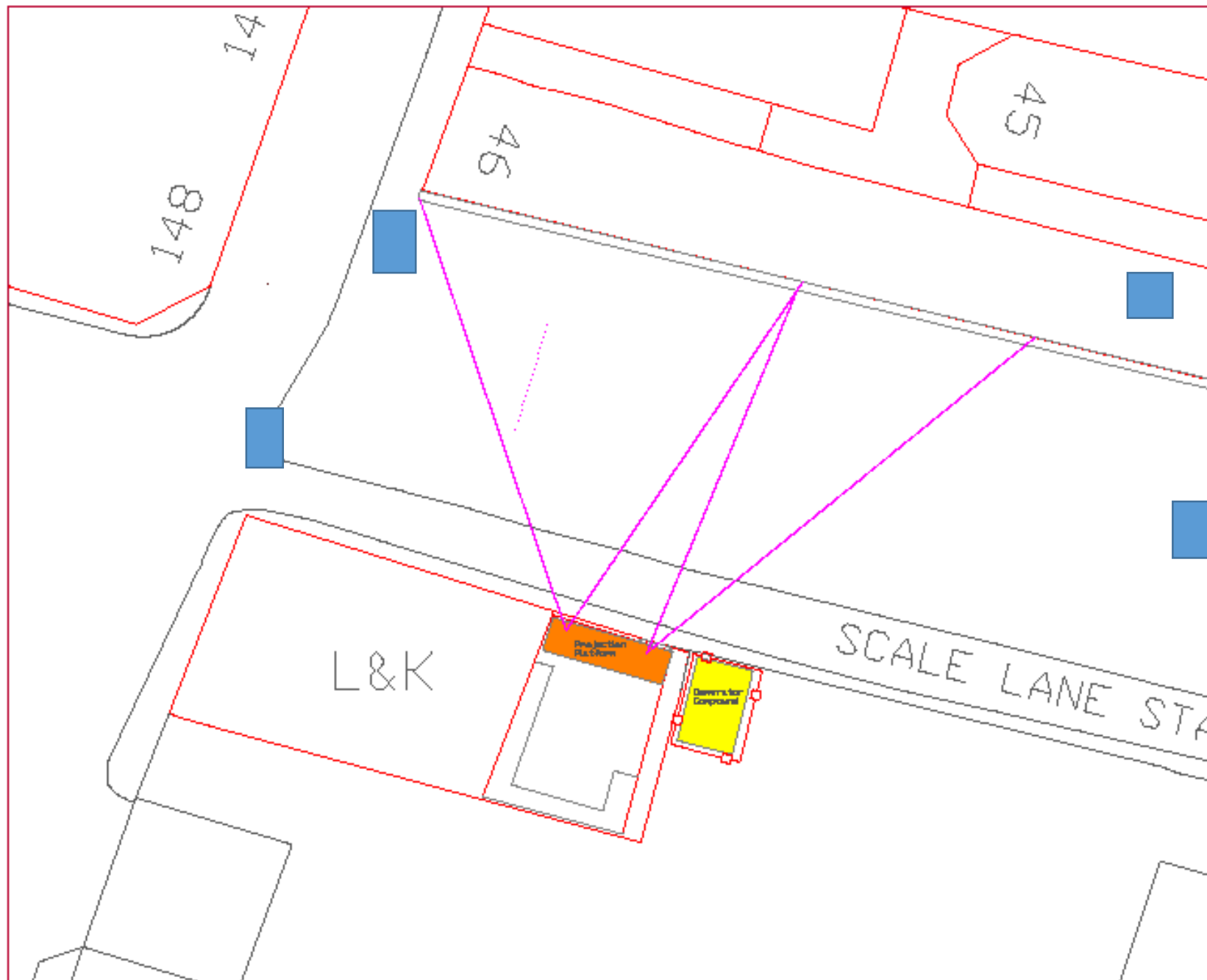
All dimensions and positions are approximate. Any critical requirements should be checked on site.

No.	Symbol	Details
1	(Blue square)	Cable Race cabinet
4	(Yellow box)	Stage Structures

Prepared by
 Jon Dyer - Site Manager
 Groundcontrol UK Ltd
 07919 86868
www.groundcontroluk.com

Location
 Queen Victoria Sq
 Hull
 Basic Ground Plan v4

Drawn	Made in Hull	Scale
by	Jan 2017	1 of 1
See notes		



SCALE LANE

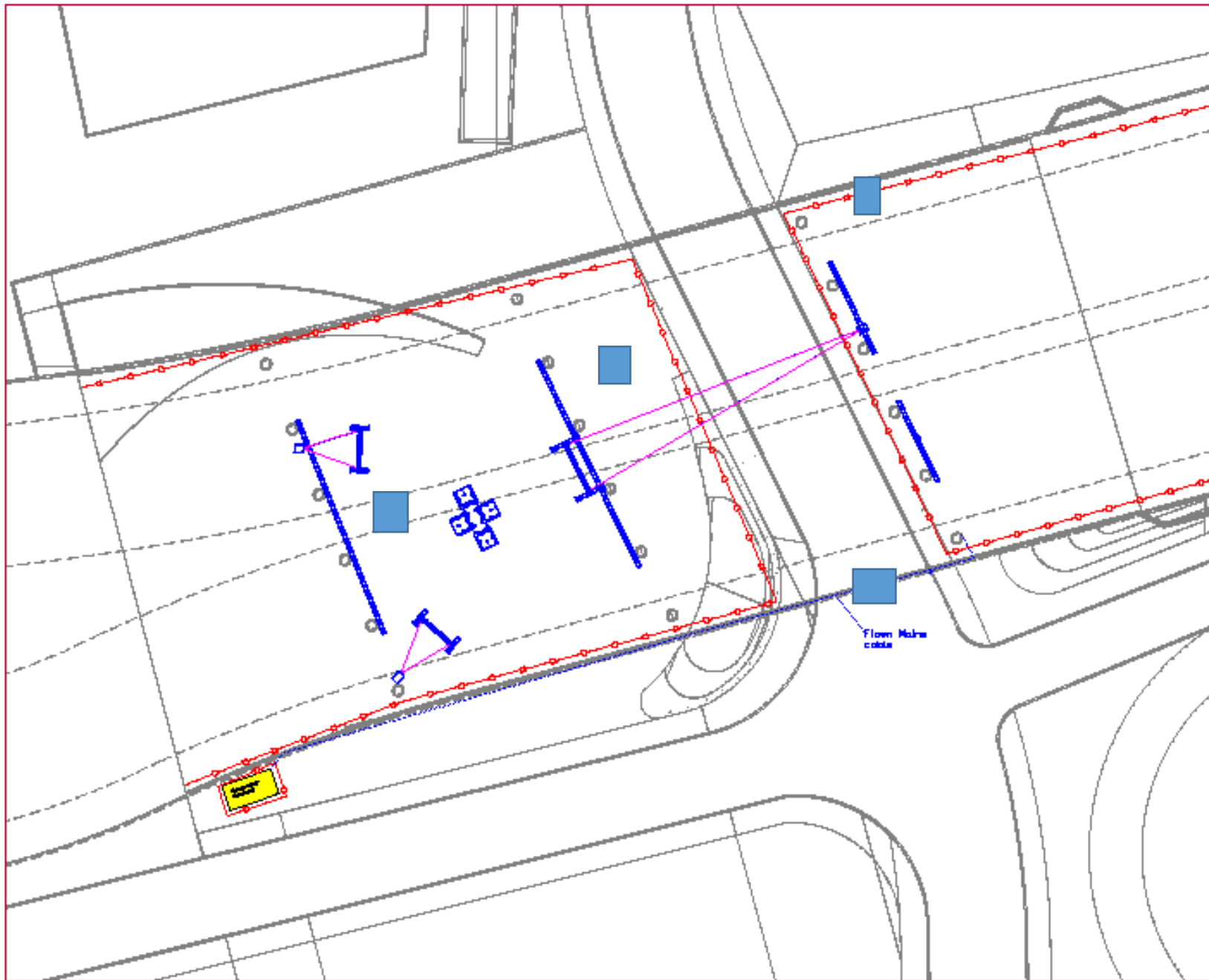
The drawing is an enlargement of the original GIC survey and additional features taken from aerial satellite images. It is for asset management purposes only and should not be used for infrastructure alterations or project disturbance.

No.	Revision Info
3	Revision 3

Scale: 1:1000

Scale Lane Station
Sheet Plan of

Scale	1:1000
Plot No.	1 of 1
Date	Jan 2017
Notes	See notes



GENERAL NOTES

All dimensions and positions are approximate. The bearing is 80 plus taken from a 50 meter.

All critical measurements should be checked on site.

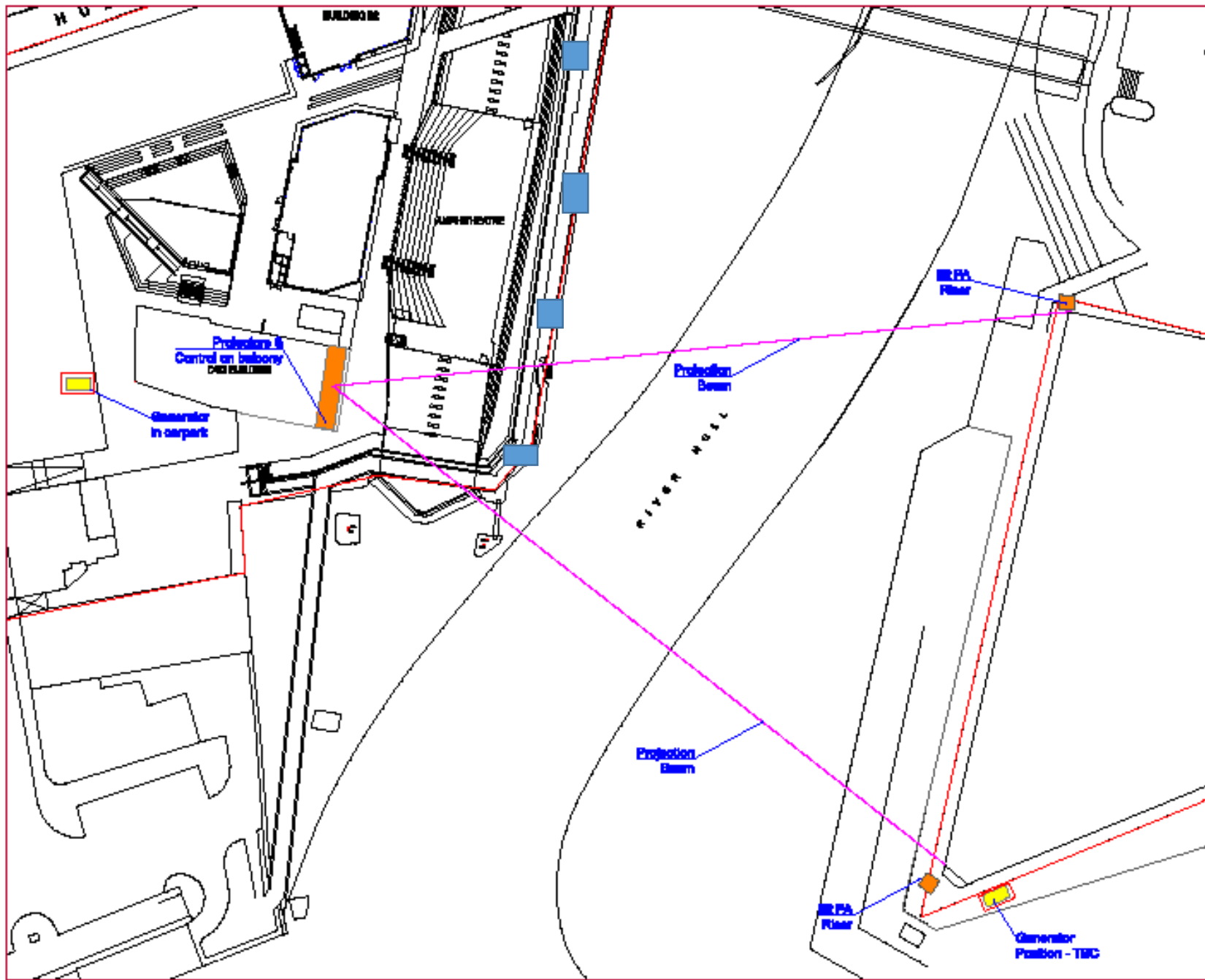
Vehicle access to the site is limited by height restrictions.

Rev.	Revision Info.
1	Revision 1

Prepared by
 Jim Carr - Site Manager
 Groundcontrol UK Ltd
 17913 86060
www.groundcontrol.co.uk

Project Name
 The Underpass
 Hull
 Underpass Show Plan
 v3

Drawn by Nade In Hull	Scale
Date Jan 2017	1 of 1
Notes See notes	



ISSUE 010

All alterations and positions are approximate.
Any critical requirements should be checked on site.

No.	Revision 3/16
L	Revision 2

Scale 1:100

Prepared by:
 Jin Gee - Site Manager
 Groundcontrol UK Ltd
 02953 882800
jin@groundcontrol.co.uk

For Approval:
 The Deep
 H&M

The Deep Show Plan
 v1

Drawn: Made in H&M	Scale: 1 of 1
Date: Jun 2017	
Notes: See notes	



GENERAL NOTES

All dimensions and positions are approximate. The drawing is an interpretation of the original D3 survey and a basic site survey undertaken for the purpose of establishing any ground infrastructure locations. Any critical measurements should be checked on site.

Vehicle access to the site is subject to height restrictions.

U.S.	Revision 2/17	
I	Revision 1	

Prepared by
Jim Dear - Site Manager
 Groundcontrol UK Ltd
 07919 86266
<http://www.groundcontroluk.com>

Site / No. 000
Deborah's Yard
 Hull
 Show Plan v5

Drawn Made in Hull	1 of 1
By Jan 2017	
See notes	