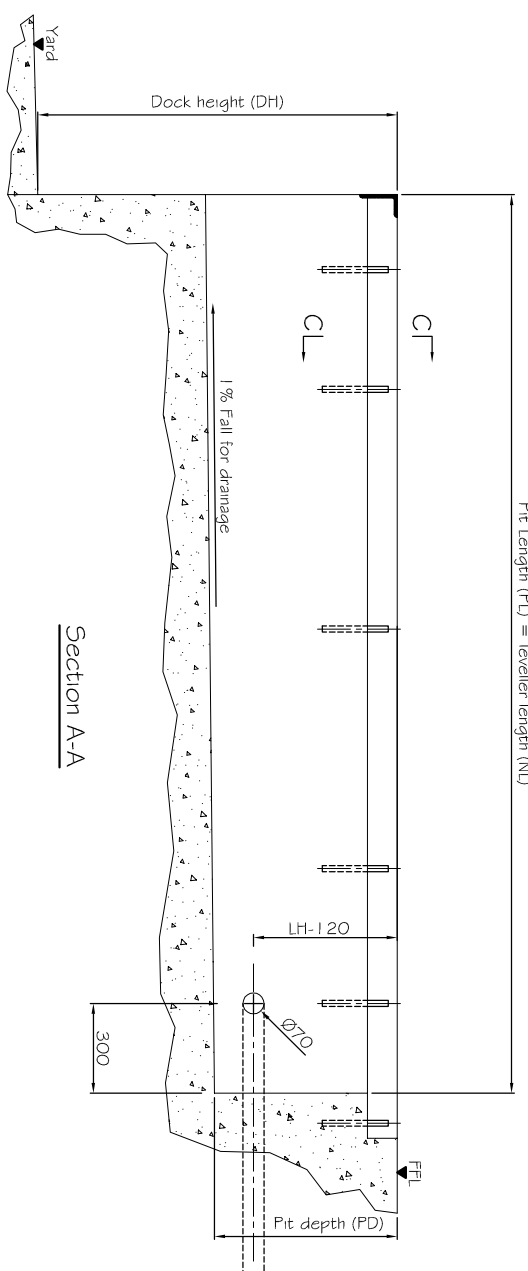
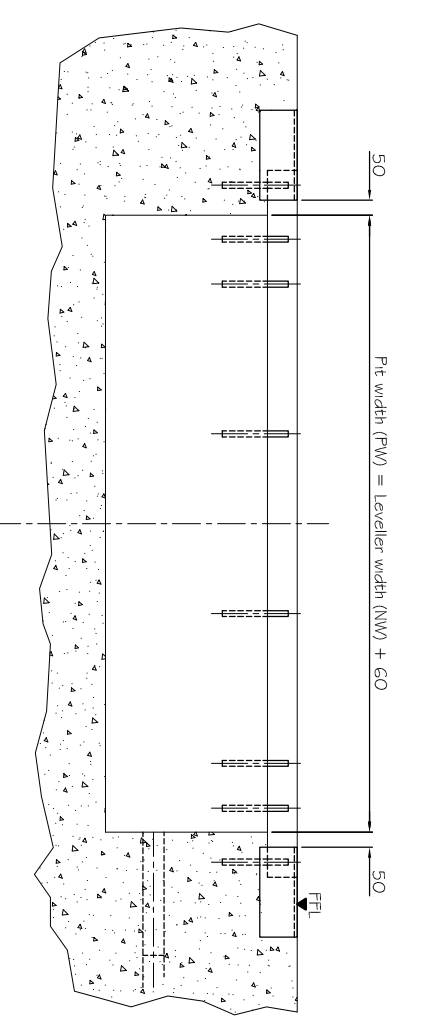


Pit Length (PL) = leveller length (NL)

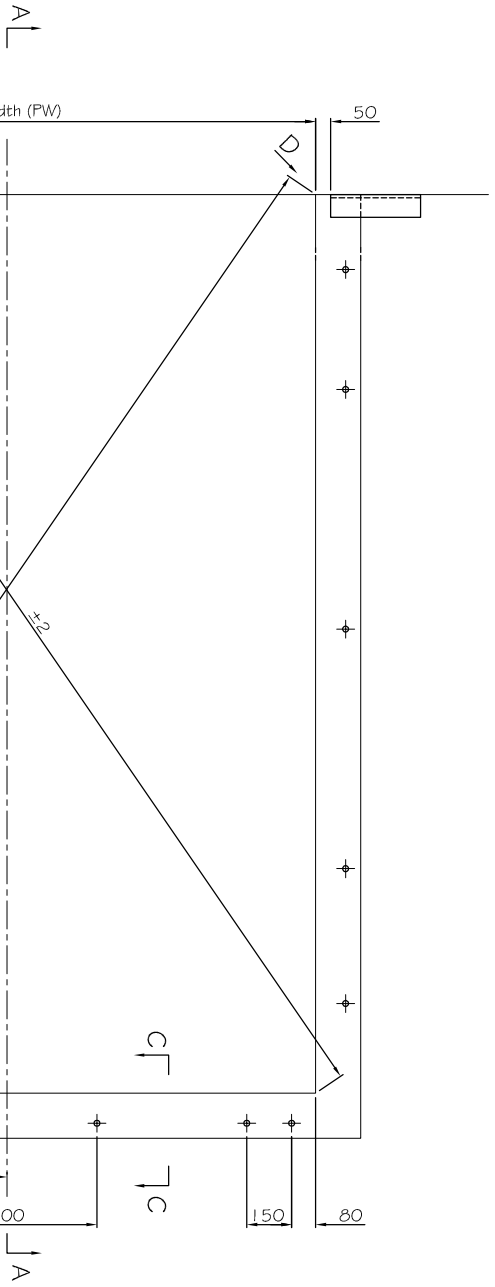


Section A-A

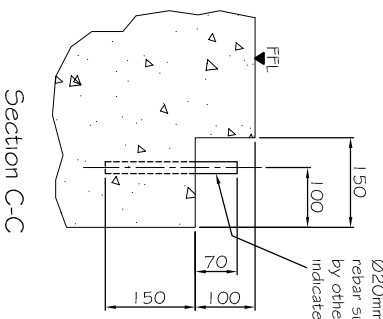


Section B-B

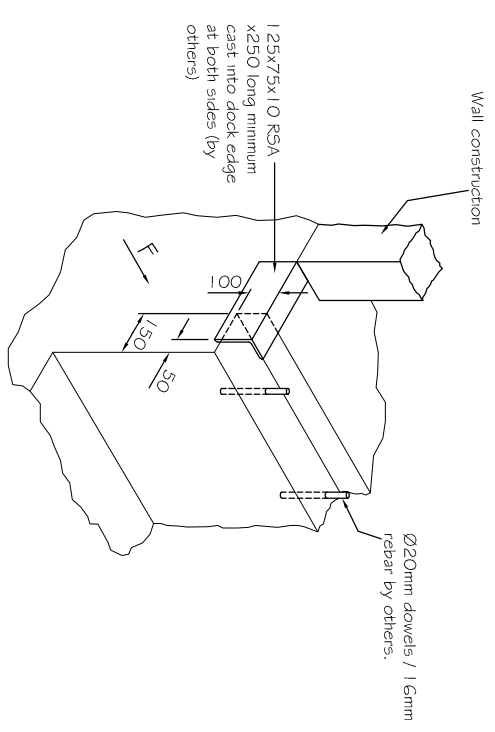
415v, 10amp, 3 phase earth + neutral isolator to be supplied by others, approx 1500mm above FFL adjacent to the desired control panel position. Refer to electrical layout for exact arrangement.



Plan View



Section C-C



View on D

F - Horizontal impact load (calculated by others) must be absorbed by the structure.

© COPYRIGHT AAES

ASSA ABLOY
 ASSA ABLOY Entrance Systems Ltd
 Industrial Door and Docking Solutions
 7Churchill Way .35A Business Park .Chapelton .Sheffield .UK .S35 2PY
 Tel: +44 (0)114 257 4330 Fax: +44 (0)114 257 4399

TITLE:
 Pit setting out details for
 SwingDOCK leveller with GT single
 axle load.
 Installation type T
Dock Leveller 2

CLIENT:
 Sewell Construction
SITE:
 Hull New Theatre

DRAWING STATUS	
PRELIMINARY	
FOR APPROVAL	
CONSTRUCTION	<input checked="" type="checkbox"/>
AS BUILT	

REV.	BY	DATE	COMMENT
A	AG	13.02	Issued for construction.

Qty.	Leveller Dimensions				Pit Dimensions		
	DH	NL	NW	LH	PL	PW	PD
01	1100?	2000	2000	600	2000	2060	650

TOLERANCES +/- 3mm (DO NOT SCALE - if in doubt ask)

SPECIFICATION: SwingDOCK

INSTALLATION TYPE: T H W

Pre-install frame (type H & W only)

LIP MATERIAL: Steel Aluminum

LIP LENGTH: 400mm 500mm

LIP OPTIONS:

- Standard
- Tapered (100mm each side)
- Fold Down Segments (1 each side)
- Bevelled (Steel Lip - 40mm)
- Bevelled (Steel Lip - 100mm)

FINISHES:

- Standard Ral 5010 - Blue
- Other (Specify Ral / B5 colour)
- Hot Dip Galvanized

ADDITIONAL OPTIONS:

- EPDM Seals (to platform perimeter)
- 40mm Platform Insulation
- Anti-slip Surface Protection
- Noise Reduction
- Low Temperature Oil
- Environmental Oil

CONTROL PANEL:

- 950 L 950 LA
- 950 DL 950 DLA
- 950 DLS 950 DLSA

CONTROL OPTIONS:

- Integrated Door Control
- Integrated Shelter Control
- Auto Leveller Retraction

BUFFER OPTIONS:

- 400x80x70 + 10mm Plate
- 500x250x90 + 15mm Plate
- 500x250x140 + 15mm Plate
- Floating (EBF)
- Height Adjustable (EBH)

NOTES:

- Level equalisation above dock: 260mm
- Level equalisation below dock: 280mm

DRAWN BY: AG

CHECKED BY: JM

DATE: 02 / 02 / 2017

DRAWING No. PG-0004687 | 3-002 **REV.** A