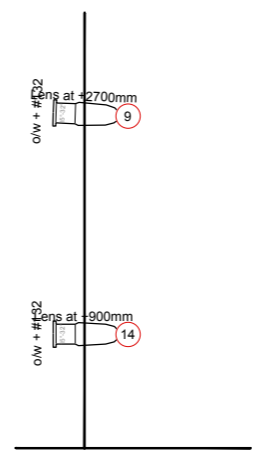
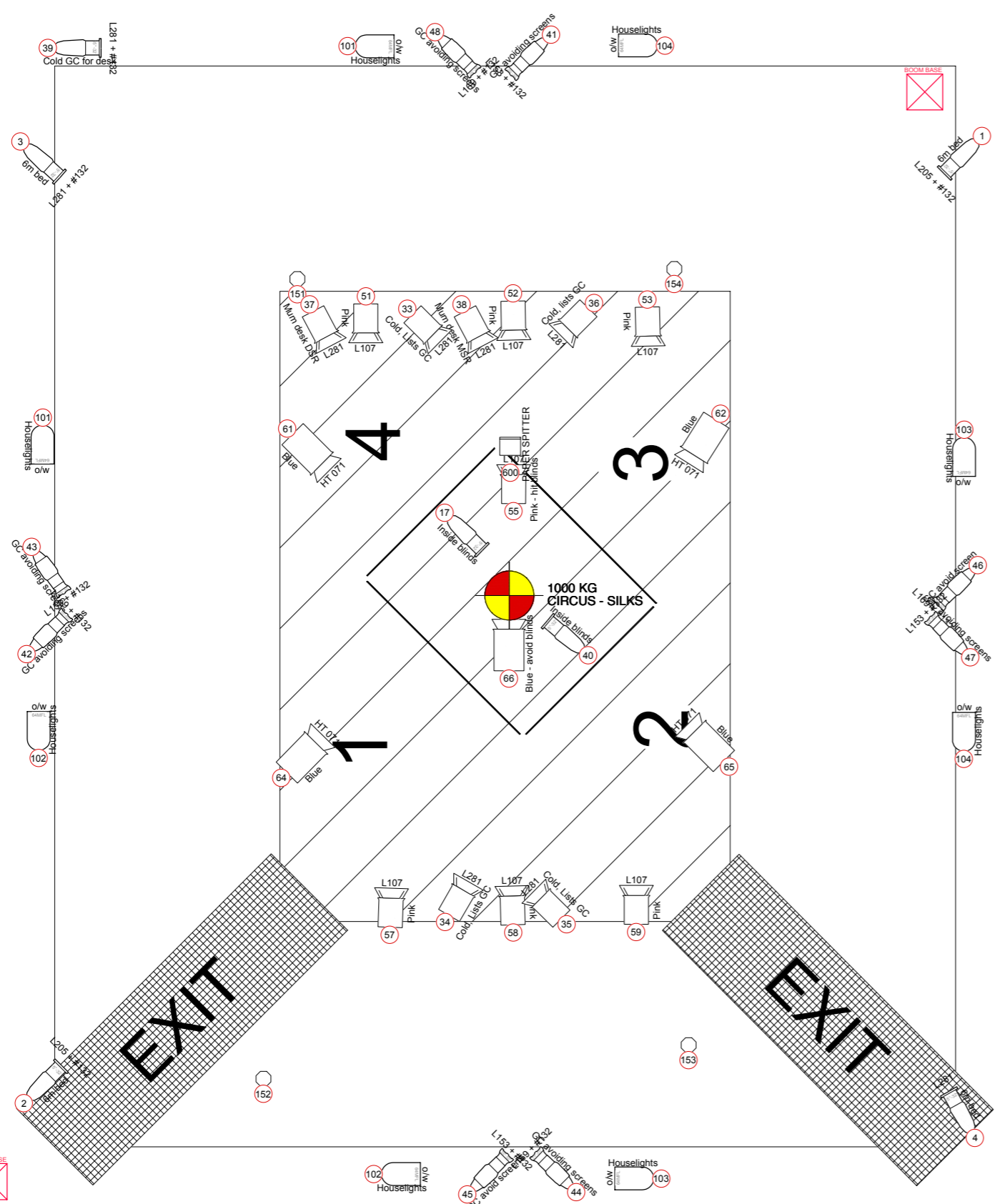


Beds Seat 4x Adults Max (5 x Children) (8x)
 Mattress Seat 4x Adults Max (5x Children) (8x)
 Bean Bags 2x Adults Max (4x Children or 2 adults and one child) (12x)
 We also tour 4x Zed bed which can seat 2-3.
 And an array of cussions and blankets to dress the seating.

Green Chairs are venue provided chairs (tall chairs are advisable)
 (X13 inside stardard layout + x96 outside))
 Please note: sizes of chair may change capacity.

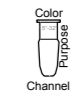
Max seating in this layout 110~ adults
 Max seating in this layout 136~ children
 (these numbers don't include additional seating shown around the outside)
 We recommend capacity of 120 Mixed without aditional seating & 150+ with.

Bedtime Stories	
Production Title: Bed Time Stories	
Drawing Title: Seating Plan	
Designer: Becky Minto	Director: Vicki Amedume
Drawn By: Mike Williams	Scale: 1:60@A3
Venue: Tour	Drawing No: 1



	Strand Alto F @ 2.5kw	5
	Strand Cantata F @ 1.2kw	13
	ETC CE Source-4 Zoom 25°-50° @ 575w	8
	PAR 64 MFL @ 1KW	8
	Strand SL 15/32 Zoom @ 575w	11

Typical



Color Summary

Color	Size	Count
	L107 185mm	8
	L153 + #132 190mm	4
	L169 + #132 190mm	4
	L205 + #132 158mm	2
	L281 185mm	5
	L281 158mm	1
	L281 + #132 158mm	2
	HT 071 245mm	5
	o/w 254mm	8
	o/w + #132 158mm	4

Lighting

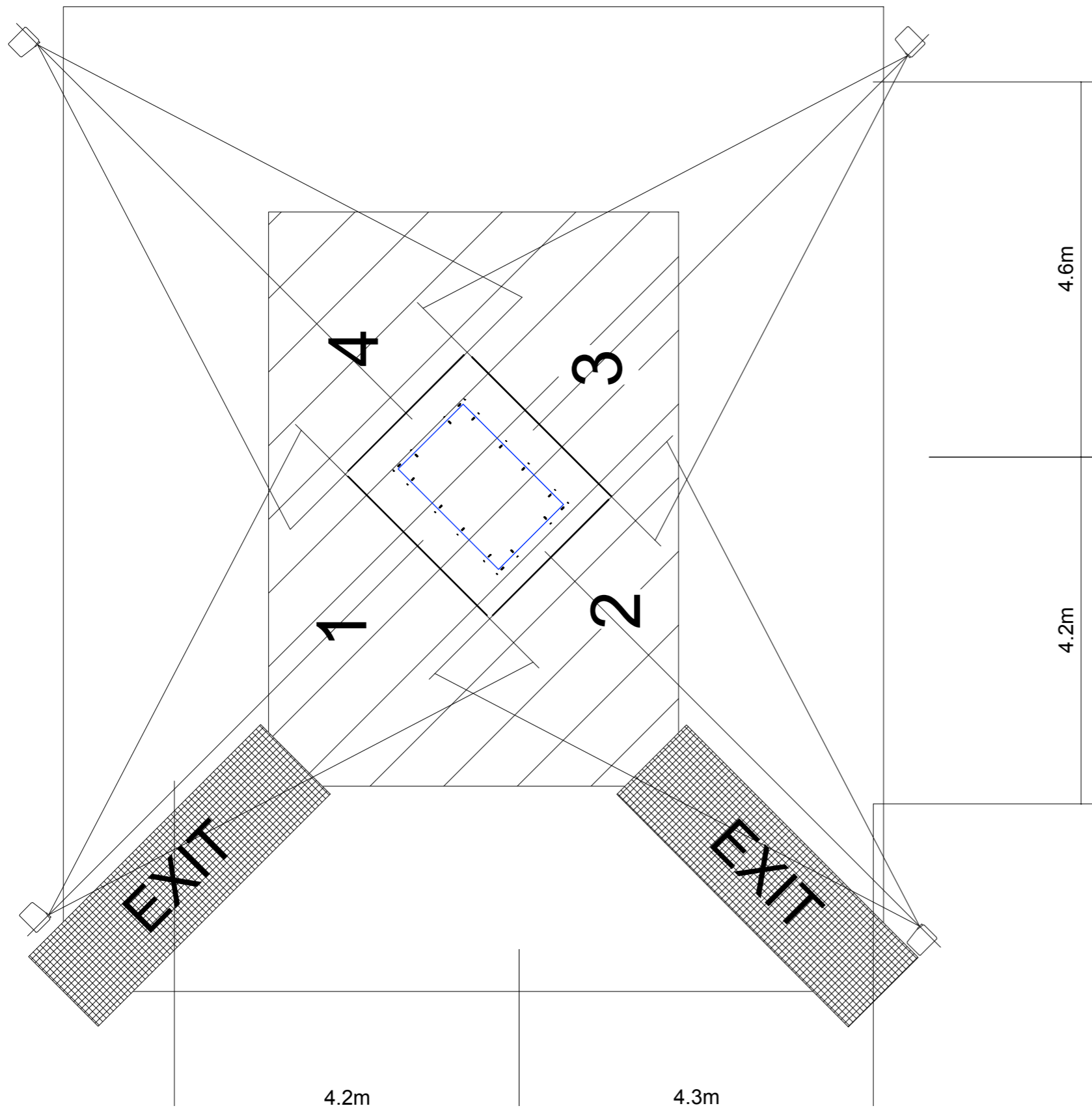
Channels 9, 19, 14, 15 are floor-mounted ooms

Channels 151, 152, 153, 154 are dimmed floor circuits

Channel 600 is a "paper spitter" special effect and must be paired with a dummy load

Channels

Bedtime Stories	
Production Title: Bed Time Stories	
Drawing Title: Lighting Plan	
Designer: Becky Minto	Director: Vicki Amedume
Drawn By: Mike Williams	Scale: 1:60@A3
Venue: Tour	Drawing No.:
Date: 12/07/2015	1



Video

Projectors are rigged in each corner on 2m drop arms.
Projectors are rigged on their sides but drawn flat on this drawing.

Dimensions for ideal locations are from center of the space.

We tour zoom lense 1.25-1.7:1

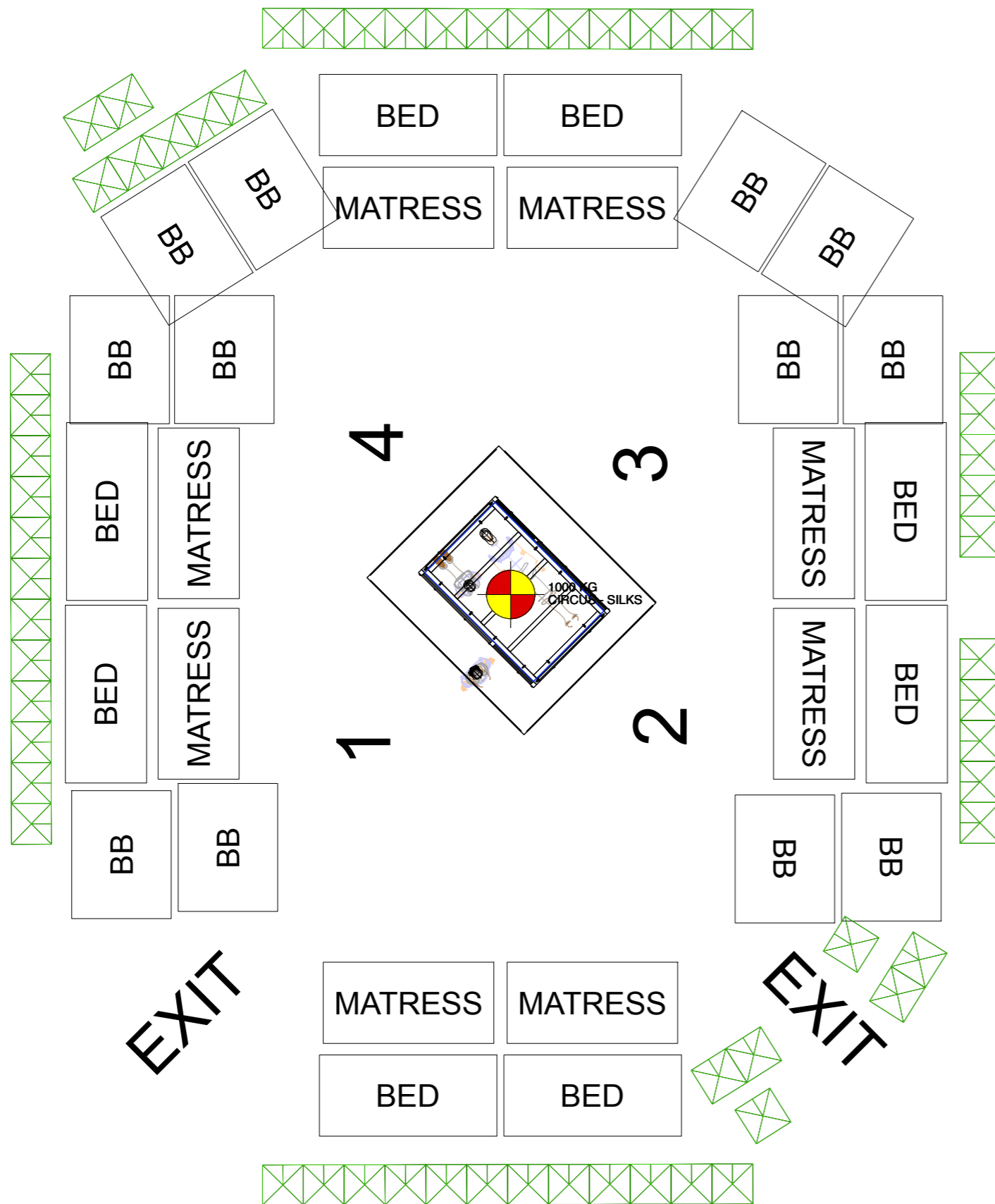
Sound

we require the venue to provide good sound coverage for the whole space. 4x full-range cabinets + 2x subs is usually sufficient.
Our playback is mixed to a stereo pair supplied at mic level XLR from a DI box.

For audiences over 100 we may need to increase speaker provision.

Ideally we would like 4x speakers rigged in from of each of the blinds.
Flown systems are preferred but the plan should be discussed with he PM at the technical site visit.

Bedtime Stories	
Production Title: Bed Time Stories	
Drawing Title: Seating Plan	
Designer: Becky Minto	Director: Vicki Amedume
Drawn By: Mike Williams	Scale: 1:60@A3
Venue: Tour	Drawing No: 1
Date:	



Rigging - Central point

The center rigging point is critical and dictates the playing space based on location.

This point is used for aerial performance (silks) and as such needs to be 1000kg SWL. (We have rigged from single points, rope/pulley systems, bridles etc. in the past so please discuss with our PM)

The silks must be reset for each performance so access to this point must be available.

Rigging - Blind structure

We would use 4-6 points to give a rigid, balanced support. Lifting points can be moved anywhere along the line of the blinds as they are a unistrut rectangle (we will usually mount our own truss between house rig and unistrut for ease).

Rigging - Paper Spitter

We have "paper spitter" special effect. Usually mounted to our blind structure but requires access between shows to refill. Relating to the lighting plot, this effect requires a dummy load lamp.

Rigging - Kabuki Line

Not shown, we require a direct route for a kabuki line from the central point to our control position to enable release of the silks via a kabuki system as part of the performance.

Bedtime Stories	
Production Title: Bed Time Stories	
Drawing Title: Rigging Plan	
Designer: Becky Minto	Director: Vicki Arnedume
Drawn By: Mike Williams	Scale: 1:60@A3
Venue: Tour	Drawing No: 1
Date: 16/07/2015	