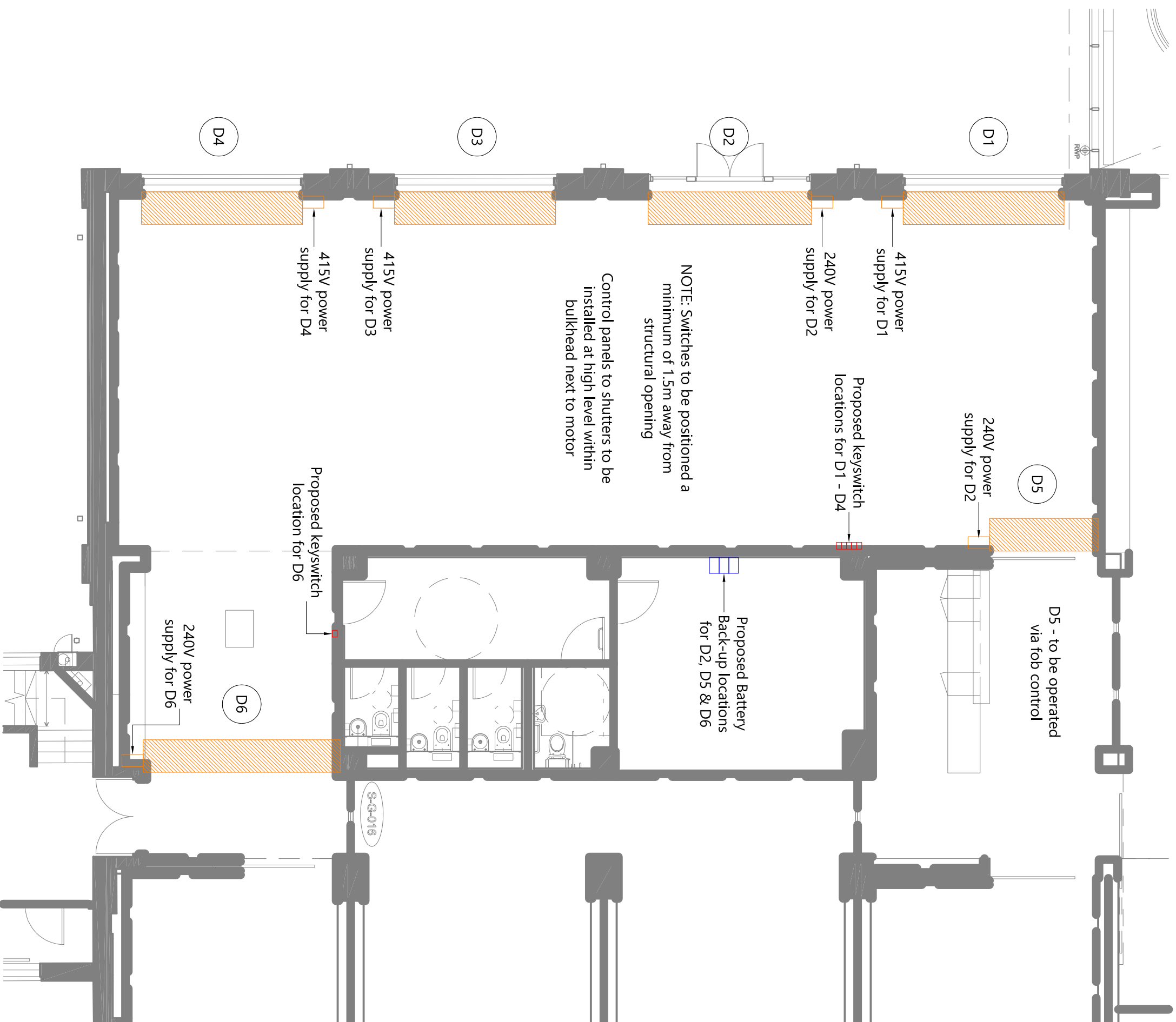


Revision	Description	Date
A	Initial Issue	15/09/2016

D5 - to be operated via fob control



NOTE: Cabling and connection of cables to be by others

NOTE: Positioning and installation of switches to be by others

NOTE: For cable types, please refer to wiring diagrams

NOTE: Shutters must only be operated when line of sight is achieved

NOTE: All power supply to be by others and provide prior to charter attendance

OBEXION

SPECIALIST SECURITY SHUTTER SYSTEMS

Charter Global Ltd - Innovation House
 Boulton Road - Reading - RG2 0NH
 T 0845 050 8705 - F 0845 050 8707
 www.obexionshutters.com
 obexion@charter-global.com

Project:
 Hull University

Drawing Title:
 Obexion™
 180C security shutter
 Security Rating 4
 Shutter Location Plan

Drawing Type:
Working Drawing

Scale(s):
 NTS @ A3
 Date: 15/09/2016

Drawn By: LM
 Checked By: BM
 Approved By: RH

Project No: CH 6603
 Drawing No: 250 B