

Notes

- All dimensions must be checked on site and not scaled from this drawing, any discrepancies to be reported to the office below.
- The Contractor shall make a survey of the site and shall be responsible for obtaining all dimensions and levels necessary for the proper construction of works as indicated.

Client
TRADEPARK

Job Title
**KINGSTON HOUSE
BOND STREET
HULL
KINGSTON UPON HUMBER**

Drawing Title
**GROUND AND FIRST
FLOOR PLANS
AS PROPOSED**

©Copyright

ELEVATION
ELEVATION DESIGN LTD

DESIGN - CONSTRUCTION
PROJECT MANAGEMENT

16 Wright Street Hull HU2 8JU

Telephone 01482 221155
Fax 01482 221105
Email nigel@elevationdesign.org.uk

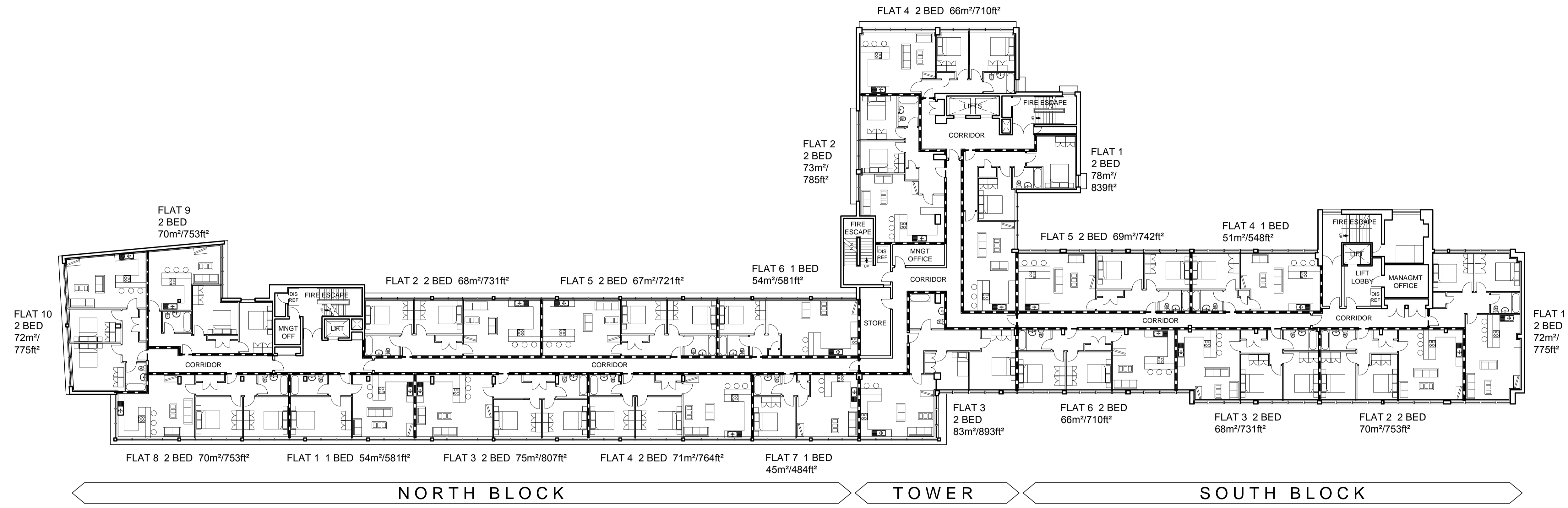
Revisions	Date	Description	DR	CH
A	10.12.15	APARTMENTS AMENDED AND REFS ADDED, REFUGES ADDED.	NAS	
B	09.05.16	GROUND FLOOR ADDED, FIRE WALL AMENDED.	NAS	
C	12.05.16	APARTMENTS ALTERED TO SUIT FIRE WALL. SCHEDULE AMENDED.	NAS	
D	13.05.16	APARTMENTS ALTERED TO REMOVE SINGLE BEDROOMS	NAS	

Status
PLANNING

Scale 1:200 @ A1 Date NOVEMBER 2015

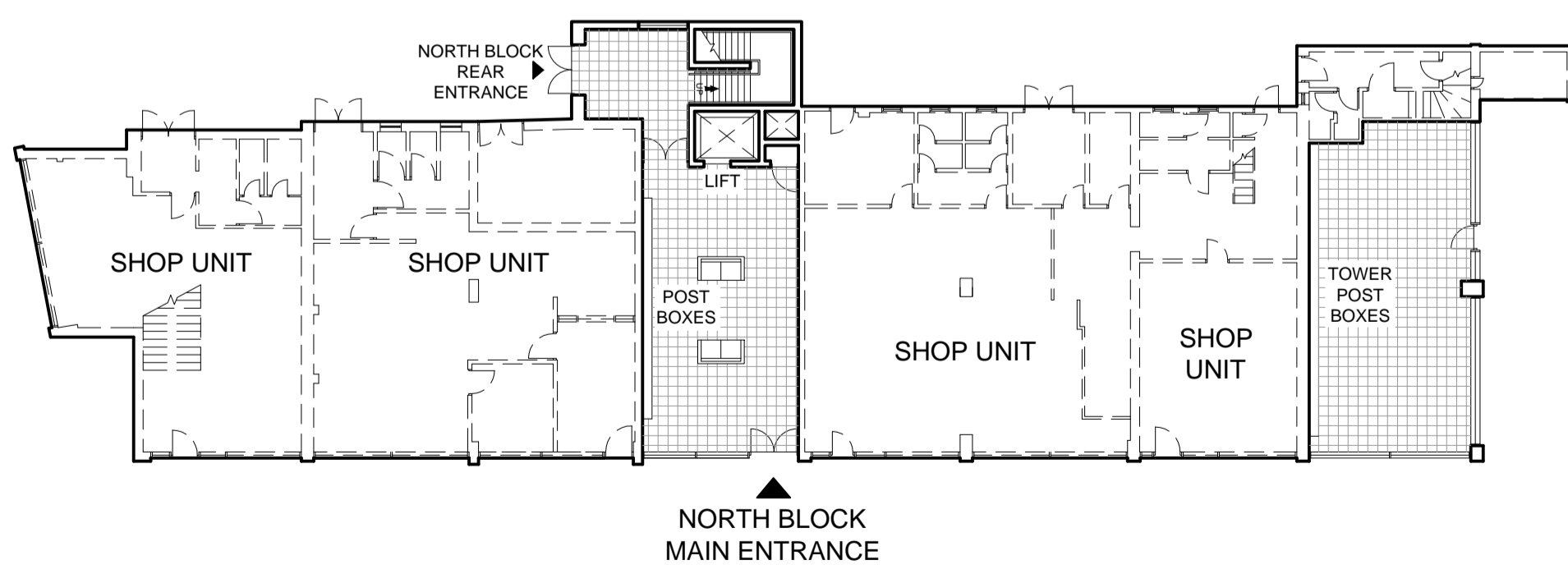
Drawn By NAS Checked Approved

Drawing No. 1907.04 Rev D



FIRST FLOOR PLAN

SCHEDULE OF ACCOMMODATION					
NORTH BLOCK		SOUTH BLOCK		TOWER	
FIRST FLOOR	7no 2-BED APARTMENTS 3no 1-BED APARTMENT	FIRST FLOOR	5no 2-BED APARTMENTS 1no 1-BED APARTMENT	FIRST FLOOR	4no 2-BED APARTMENTS 8no 2-BED APARTMENTS
2ND TO 3RD FLOORS	14no 2-BED APARTMENTS 6no 1-BED APARTMENT	2ND TO 3RD FLOORS	6no 2-BED APARTMENTS 2no 1-BED APARTMENTS	2ND TO 3RD FLOORS	27no 2-BED APARTMENTS 18no 1-BED APARTMENTS
NORTH BLOCK TOTAL 30 APARTMENTS		SOUTH BLOCK TOTAL 14 APARTMENTS		TOWER BLOCK TOTAL 57 APARTMENTS	
TOTAL FOR BUILDING: 101 APARTMENTS = 71no 2-BEDS AND 30no 1-BEDS (29% 1-BEDS)					



GROUND FLOOR PLAN

