

No.	Image	Description	Maker	Material
1		British national parks	Ulster	Linen
2		King William III	Ulster	Linen

3



Herbs & Spices

Ulster

Linen

4



British nature reserves

Ulster

Linen

5



All England 12  
cricket team  
1863-4

Ulster

Linen

6



Hadrian's Wall

Vista

Cotton



7		Men of England	No Maker	cotton/linen
8		Jockeys, red	No maker	Linen



9

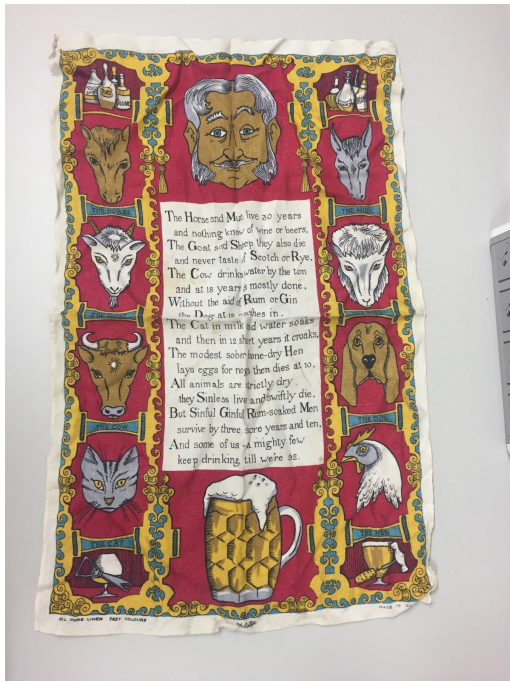


Rules for the family

No maker

Linen

10



Drinking poem with animals

Ulster

Linen

11		Hexham, 'the heart of all England'	Robbs of Hexham	Linen
12		Badgers on leaves	SPNR	Linen

13



Ireland's treasures

No maker

linen

14



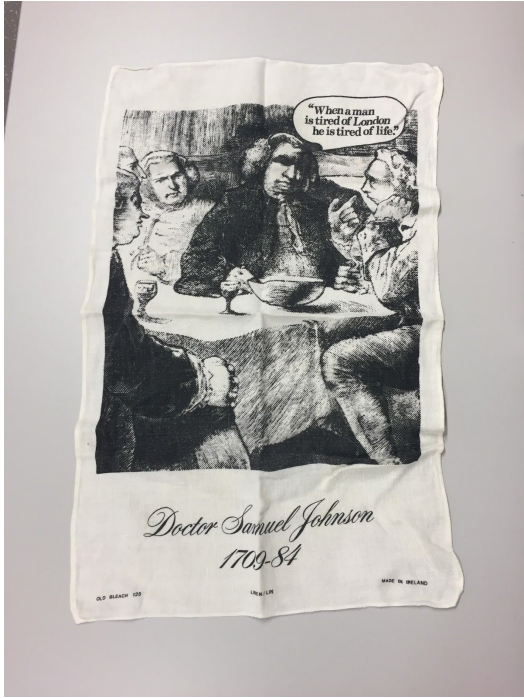
Other textile:  
Red hanging  
calendar, 1972

No maker

linen



15



“When a man is tired of London”  
Samuel Johnson

Old Bleach  
125

Linen




16



St. Paul's  
Cathedral

Irish Cabin

Linen

<p>17</p>		<p>Durham Cathedral</p>	<p>Richlin</p>	<p>Linen/cotton</p>
<p>18</p>		<p>Queen's University, Belfast</p>	<p>Fragonard</p>	<p>Linen</p>
<p>19</p>		<p>All England 12s Cricket team. Second of same design</p>	<p>Ulster</p>	<p>Linen</p>

20



Four foul

Dunmoy

Linen

21





"Cricket"

Laura Ashley

Linen



<p>22</p>		<p>Yorkshire map with crests</p>	<p>No Maker</p>	<p>Linen</p>
<p>23</p>		<p>"Queen of the Kitchen"</p>	<p>Pat Albeck</p>	<p>Linen</p>

<p>24</p>	 <p>The image shows a vintage newspaper clipping titled "COURSHIP" with a decorative floral border. The text is arranged in columns and includes sections such as "What to Do and How to Do It", "Foolish Presumption", "Well-exposed Letters", "Preliminary Exercises", and "Reciprocal Exchanges". There are two illustrations: a small one at the top left and a larger one of a woman in a long, dark dress on the right side. The paper is aged and has some creases.</p>	<p>"Courtship"</p>	<p>Laura Ashley</p>	<p>Linen</p>
<p>25</p>	 <p>The image shows a vintage map titled "WEST ARDNAMURCHAN". The map depicts a geographical area with various features, including a compass rose in the top left corner, several small illustrations of buildings or structures, and a network of lines representing roads or boundaries. The map is printed on aged, slightly yellowed paper.</p>	<p>West Ardnamurchan</p>	<p>M &amp; A. Burgess</p>	<p>Linen</p>

<p>26</p>		<p>Hexham, 'the heart of all england', <b>second of same design</b></p>	<p>Robbs of Hexham</p>	<p>Linen</p>
<p>27</p>		<p>Red, white, and brown floral</p>	<p>Bestlinen/ Lucienne Day</p>	<p>Linen</p>



28



Vegetables,  
assorted

Pat Albeck

Linen

29



"The Pet  
Shop"

Pat Albeck

Linen

<p>30</p>		<p>Roses in glass</p>	<p>No maker</p>	<p>Linen</p>
<p>31</p>		<p>“The Cook”</p>	<p>Pat Albeck/ The National Trust</p>	<p>Linen</p>

32



Various herbs with rope border

Taunton Vale Industries

Linen

33



"Billingsgate Market"

Pat Albeck

Linen