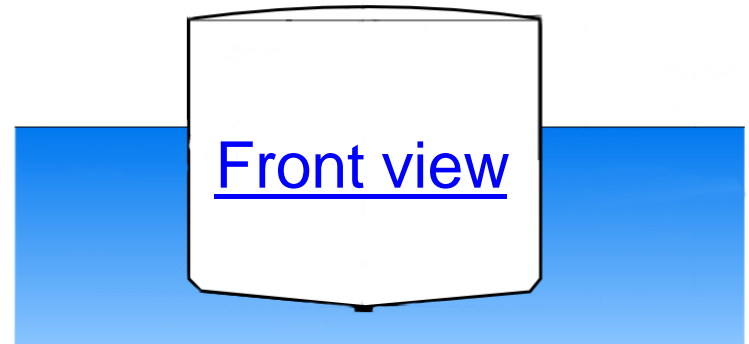
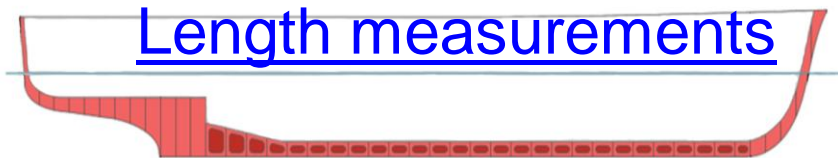
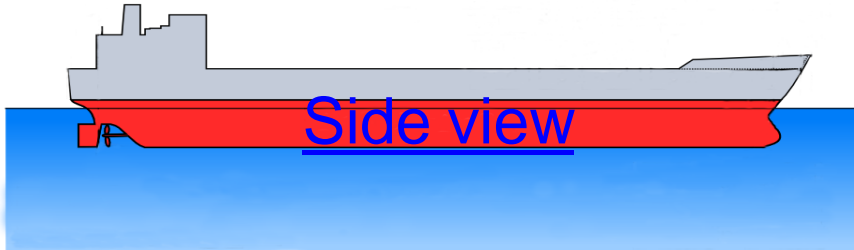


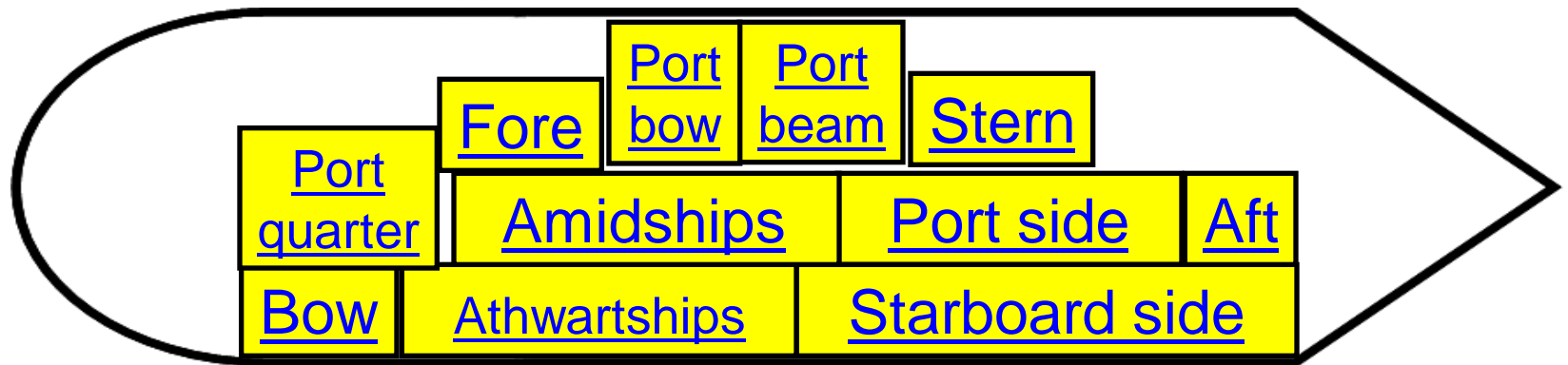
Ship terms



Photos gallery

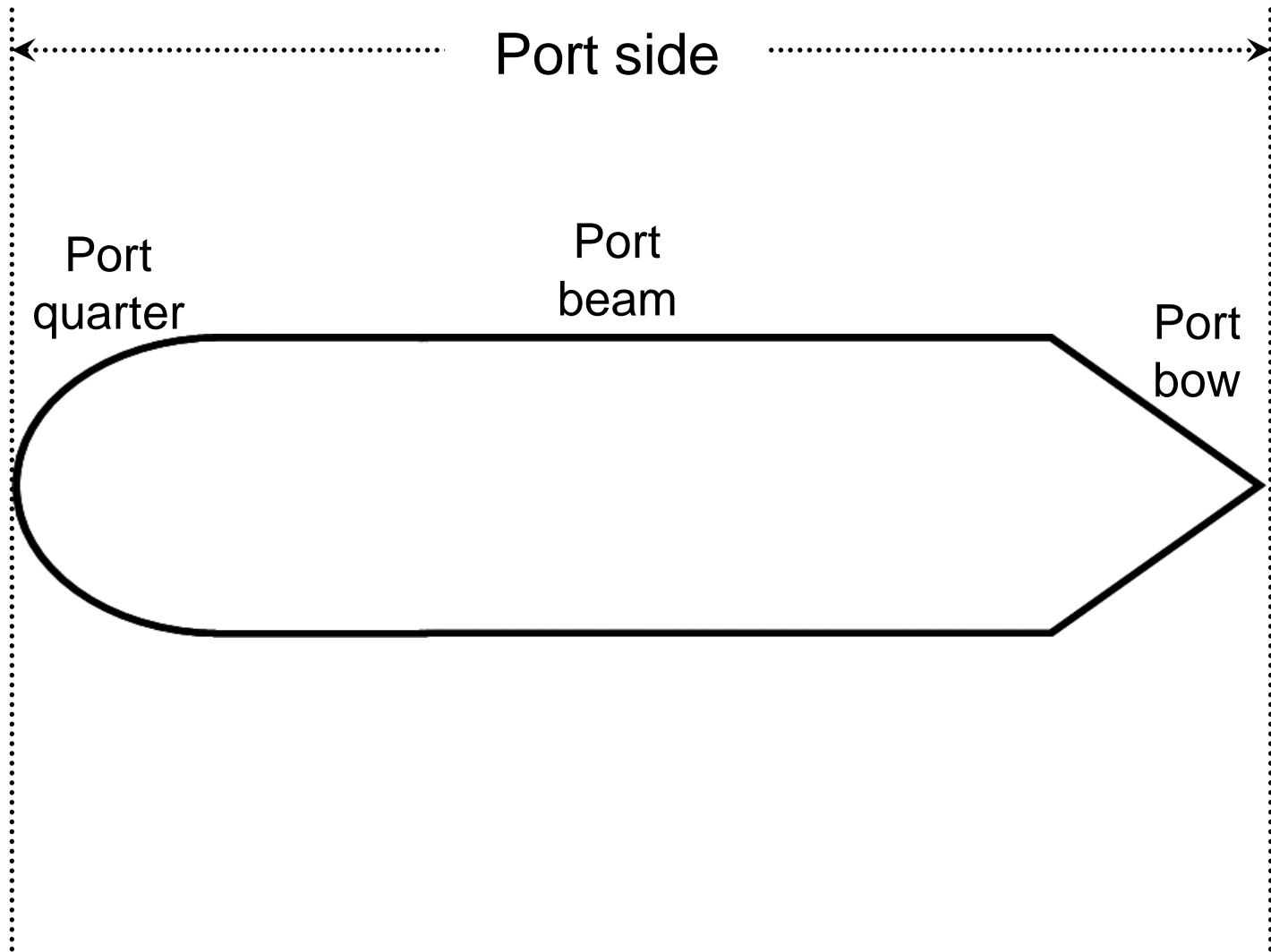
Credits

Use arrow keys to go to the next (→) or to the previous (←) slide, or the pointer to navigate through the document.



All in one

Main index



[Main index](#)

Stern

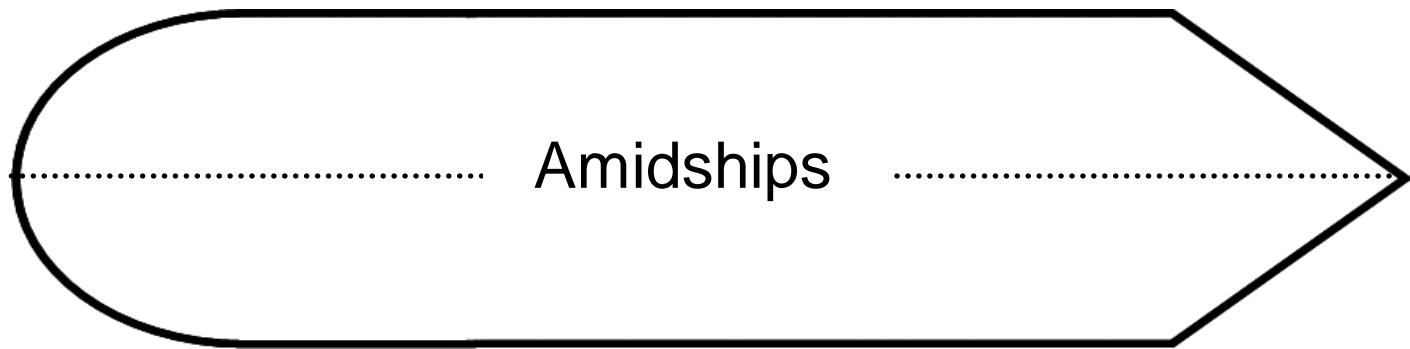


[Main index](#)



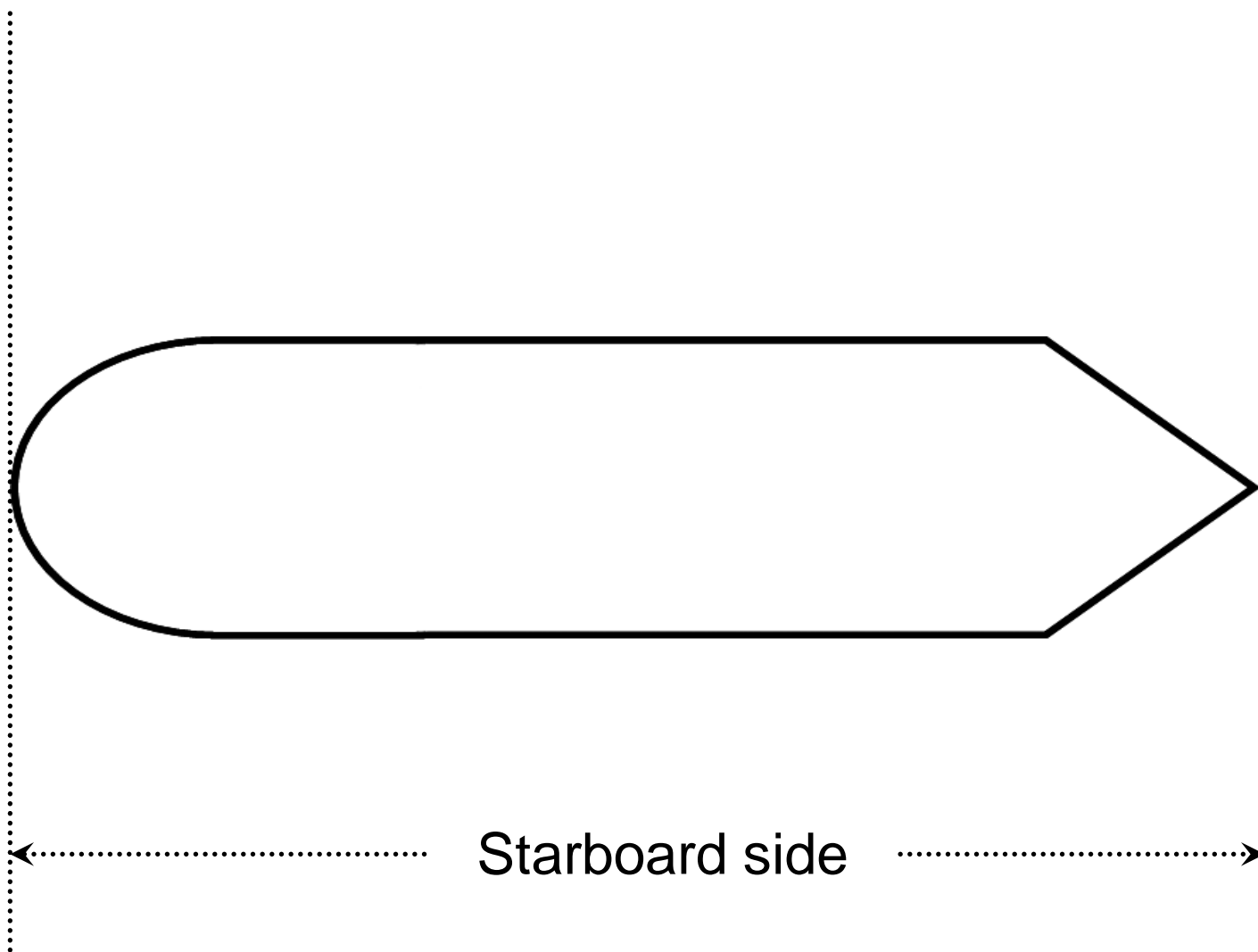




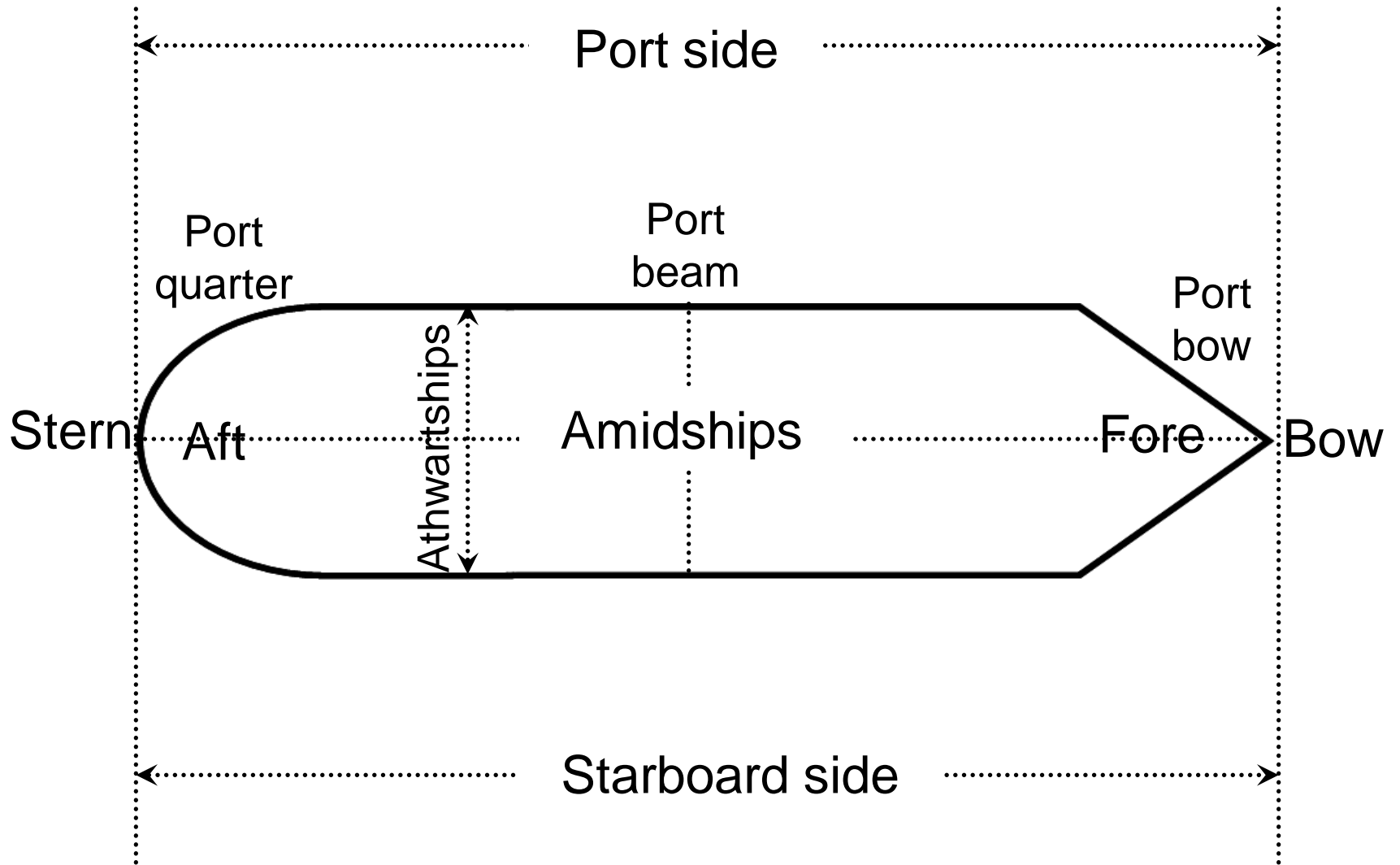


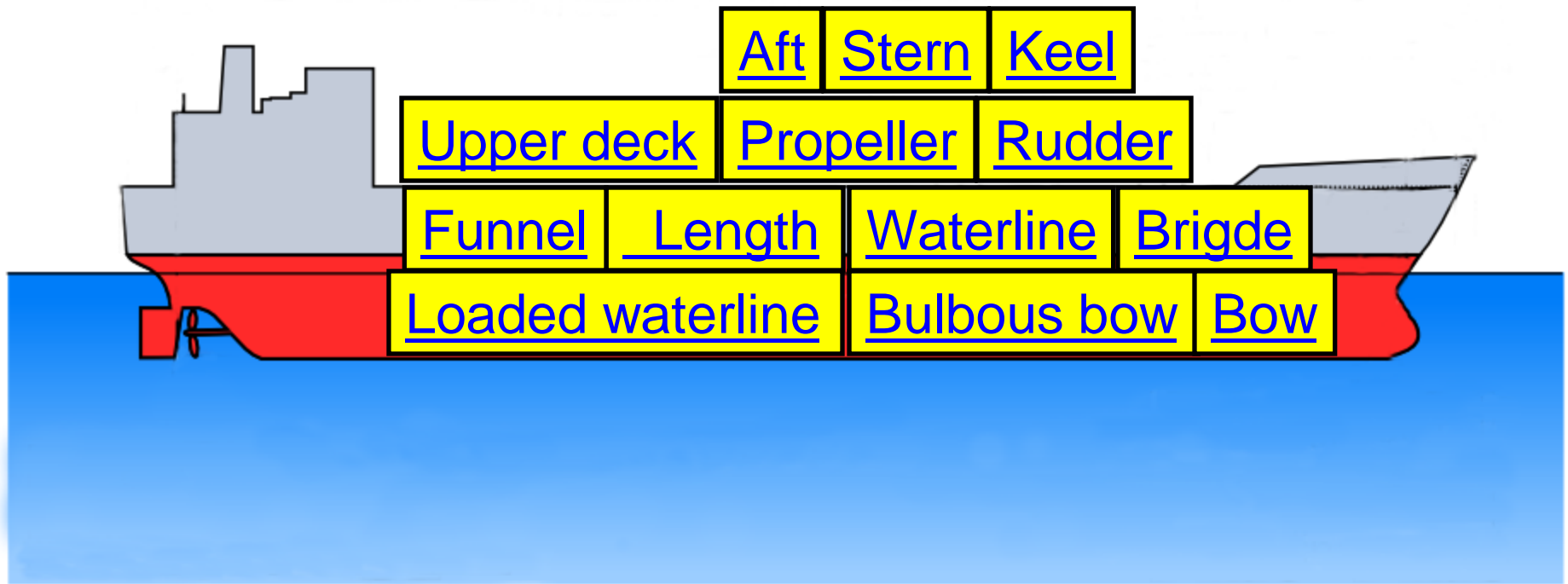
[Main index](#)





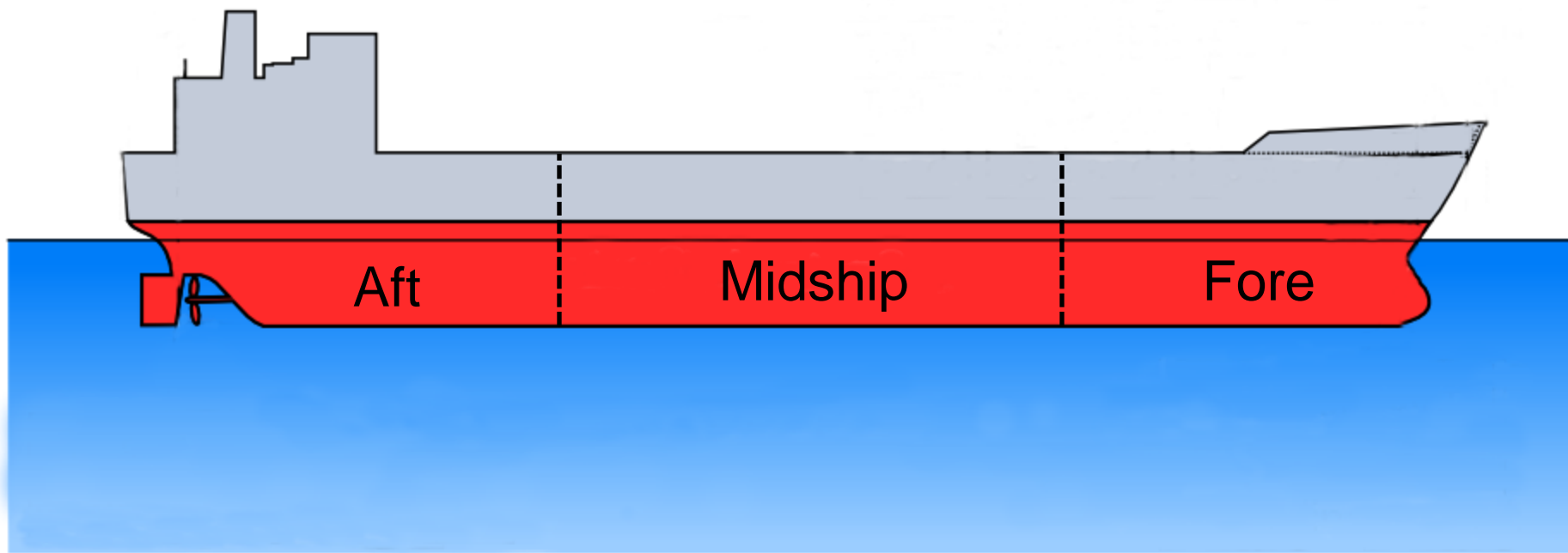
[Main index](#)

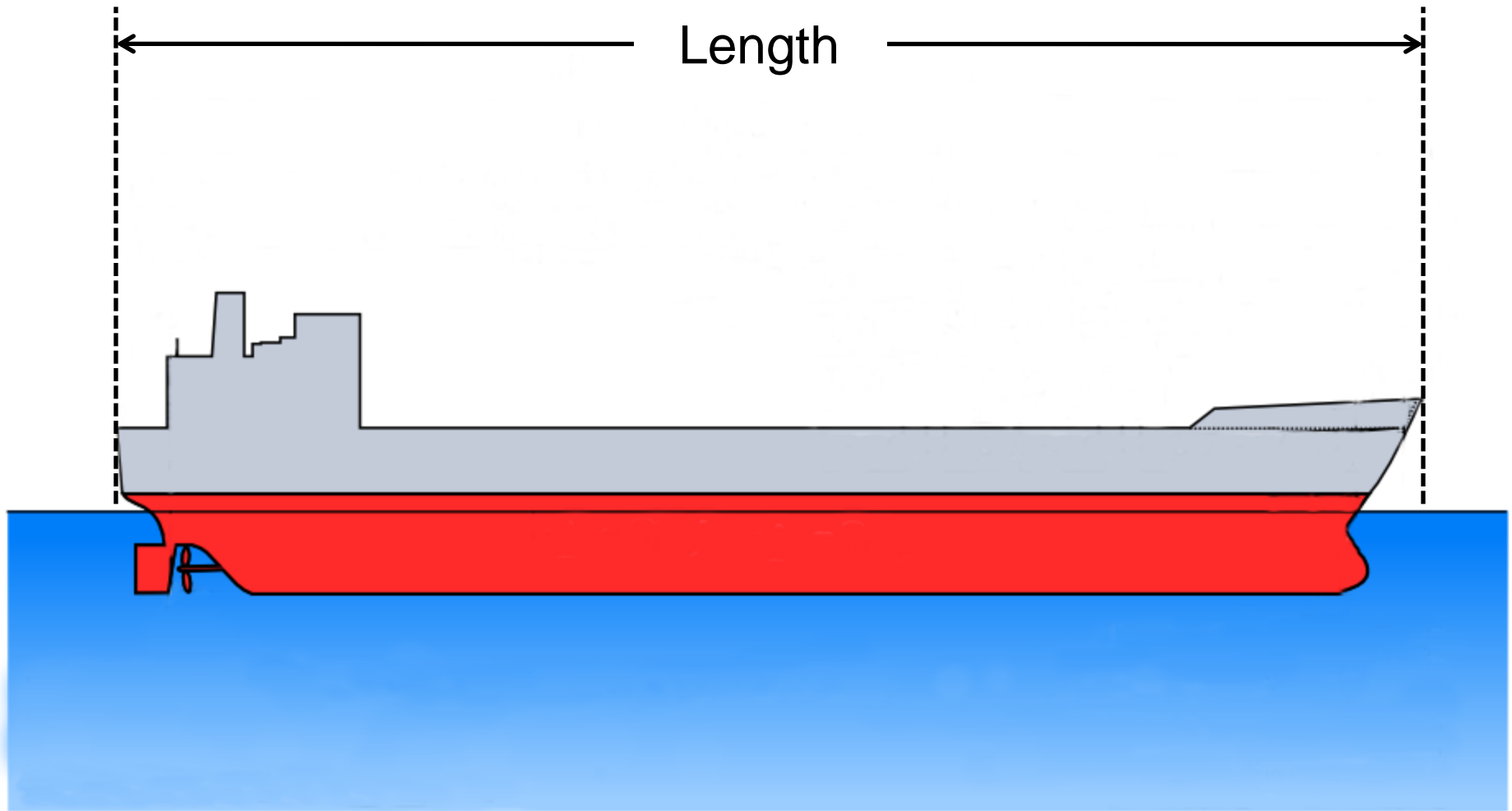




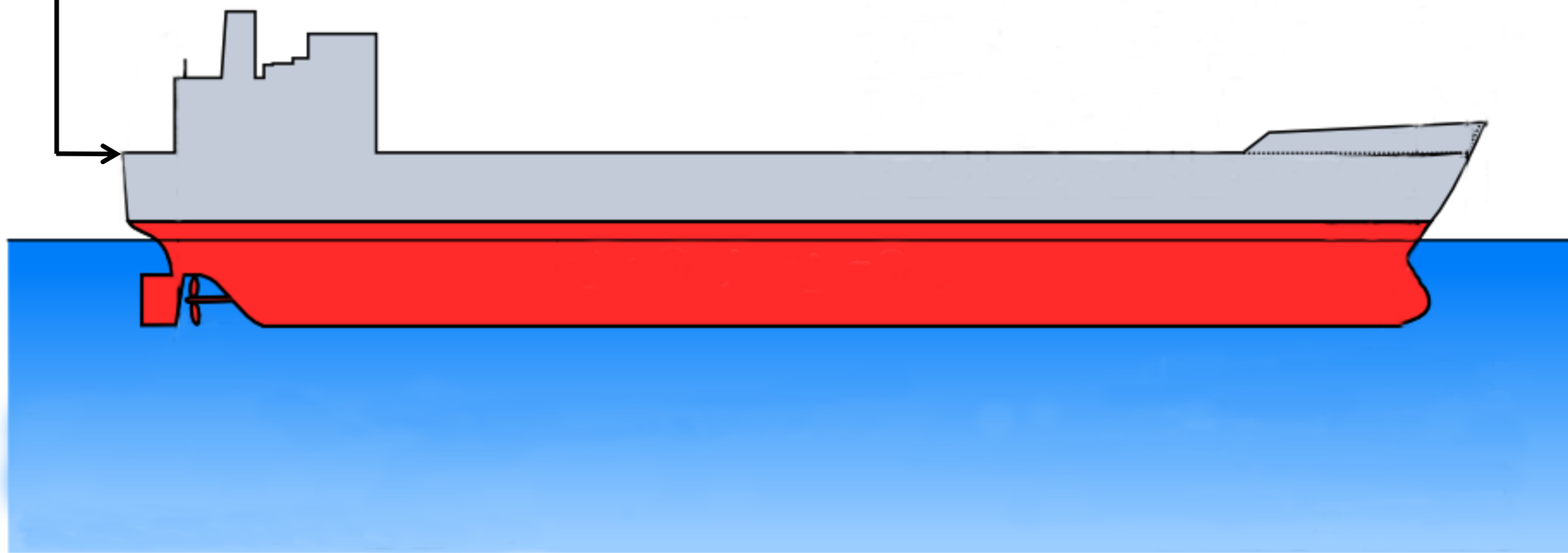
All in one

Main index



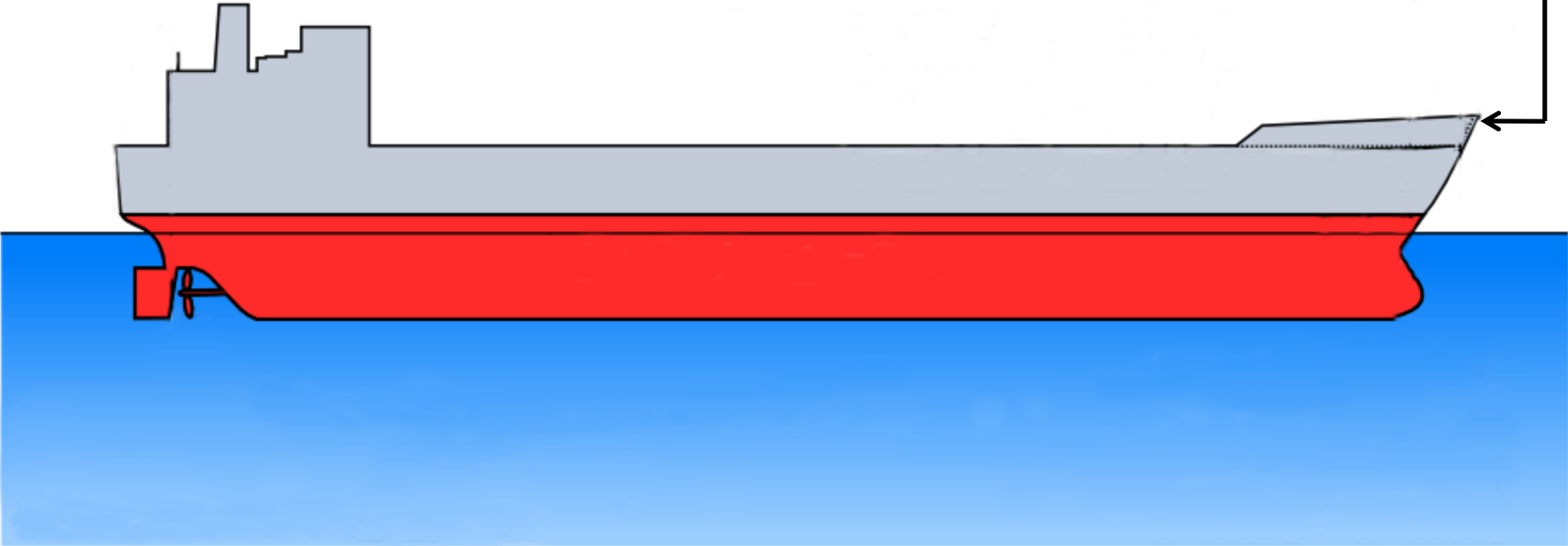


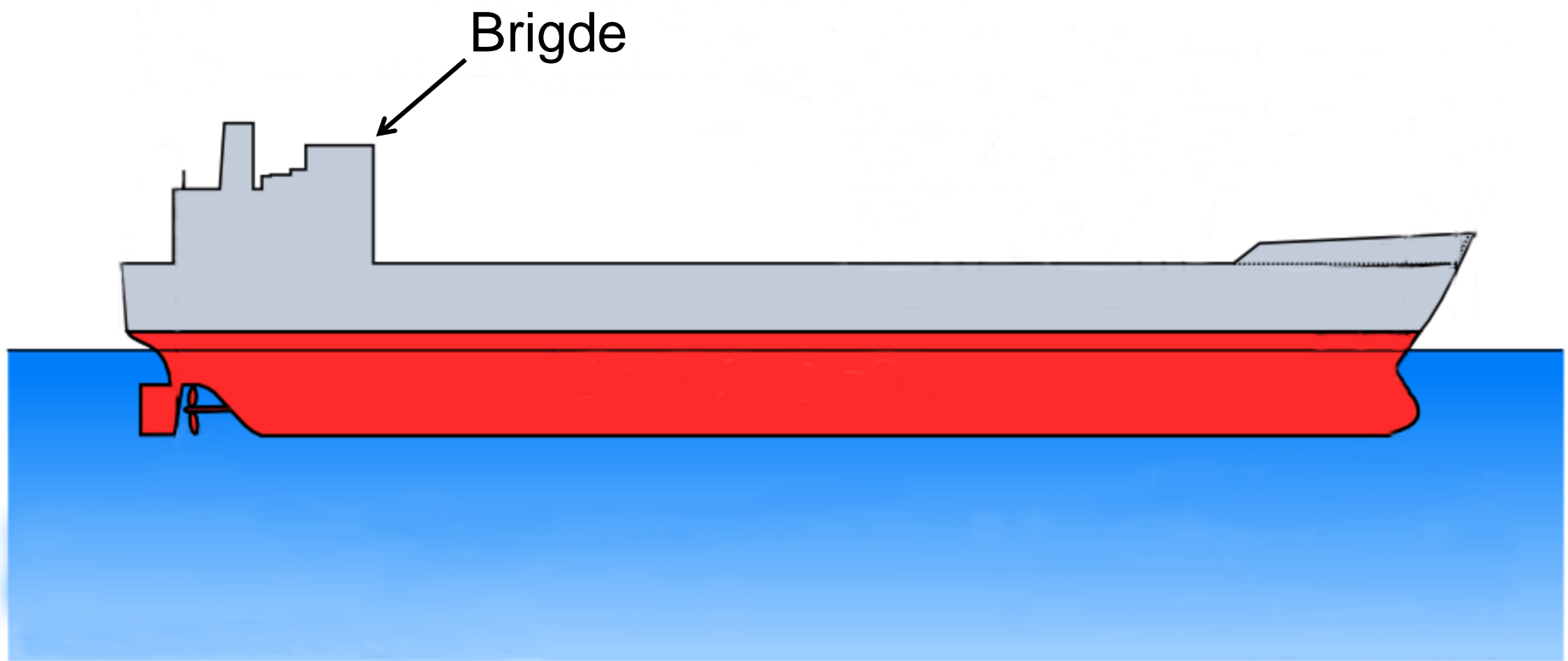
Stern



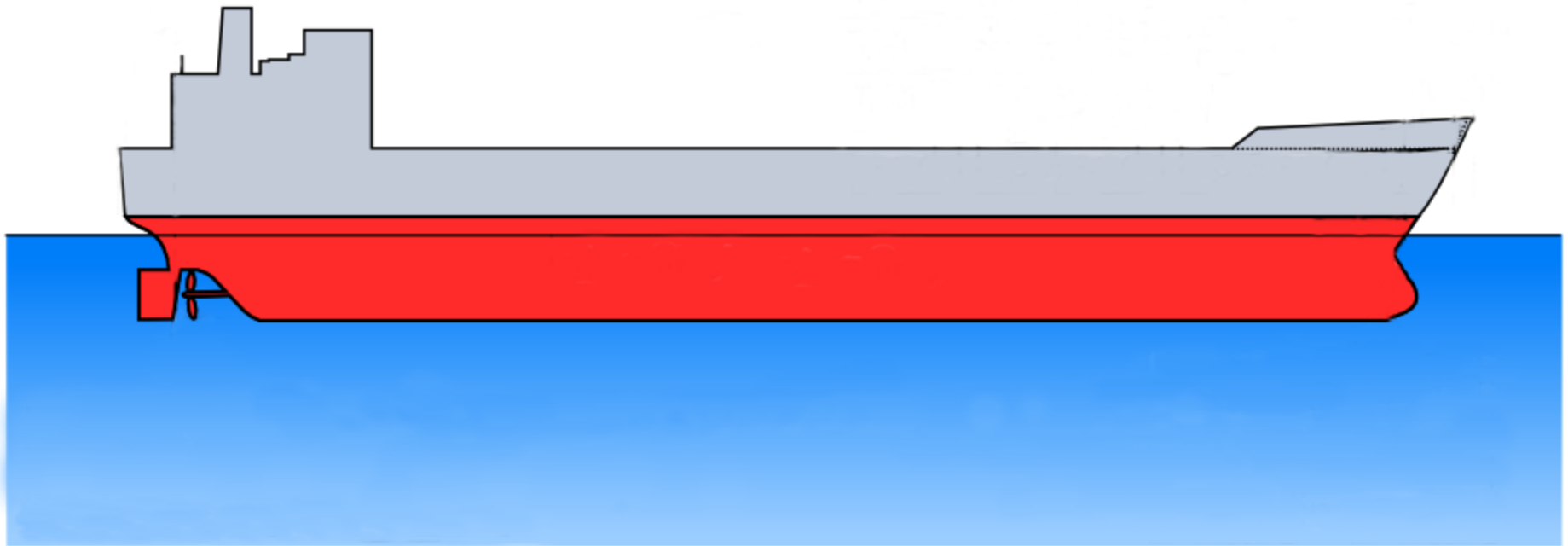
[Main index](#)

Bow

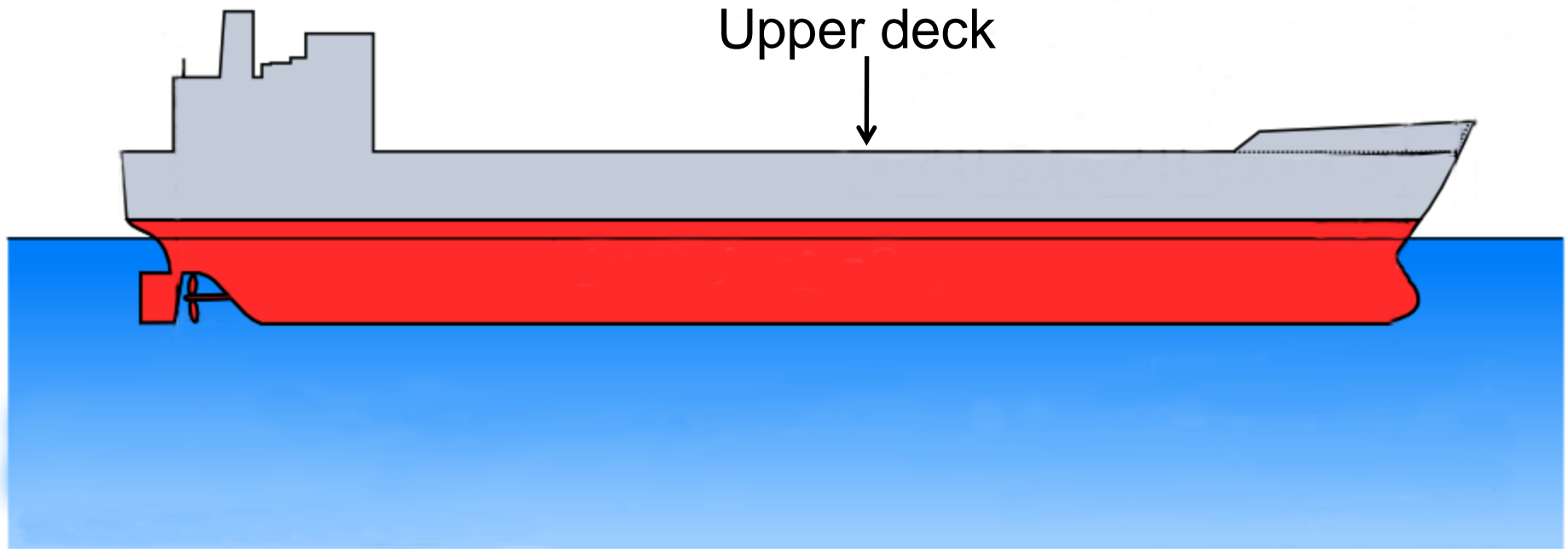


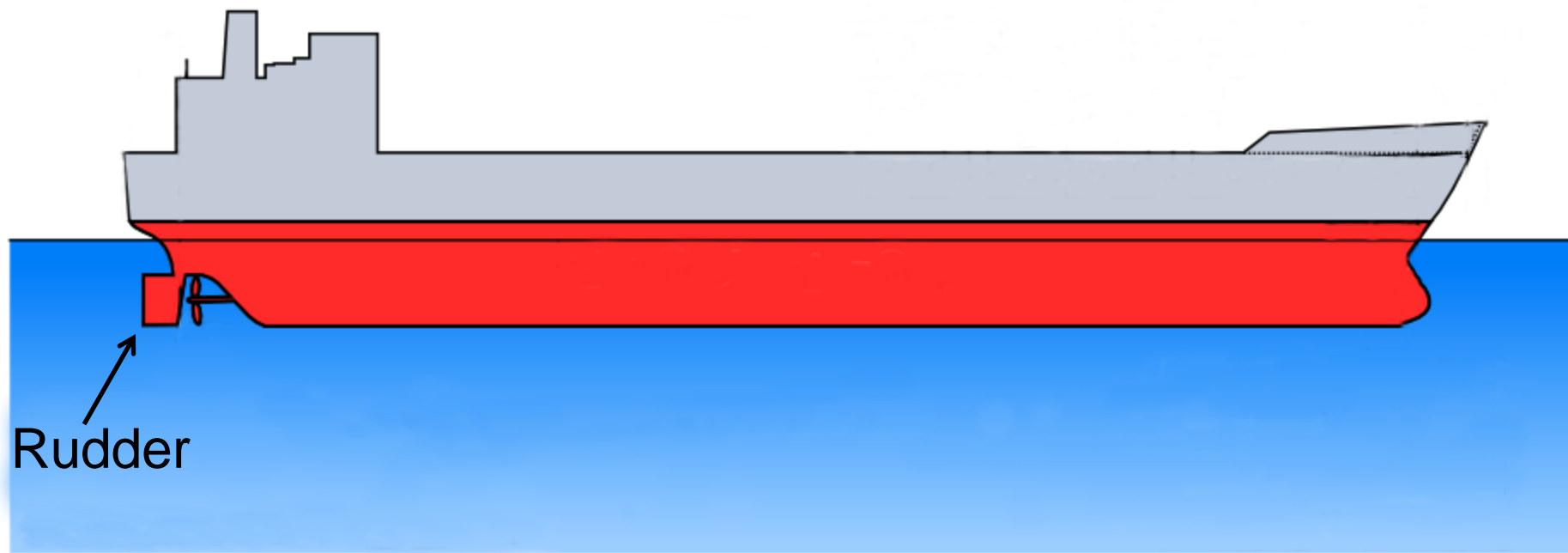


Funnel



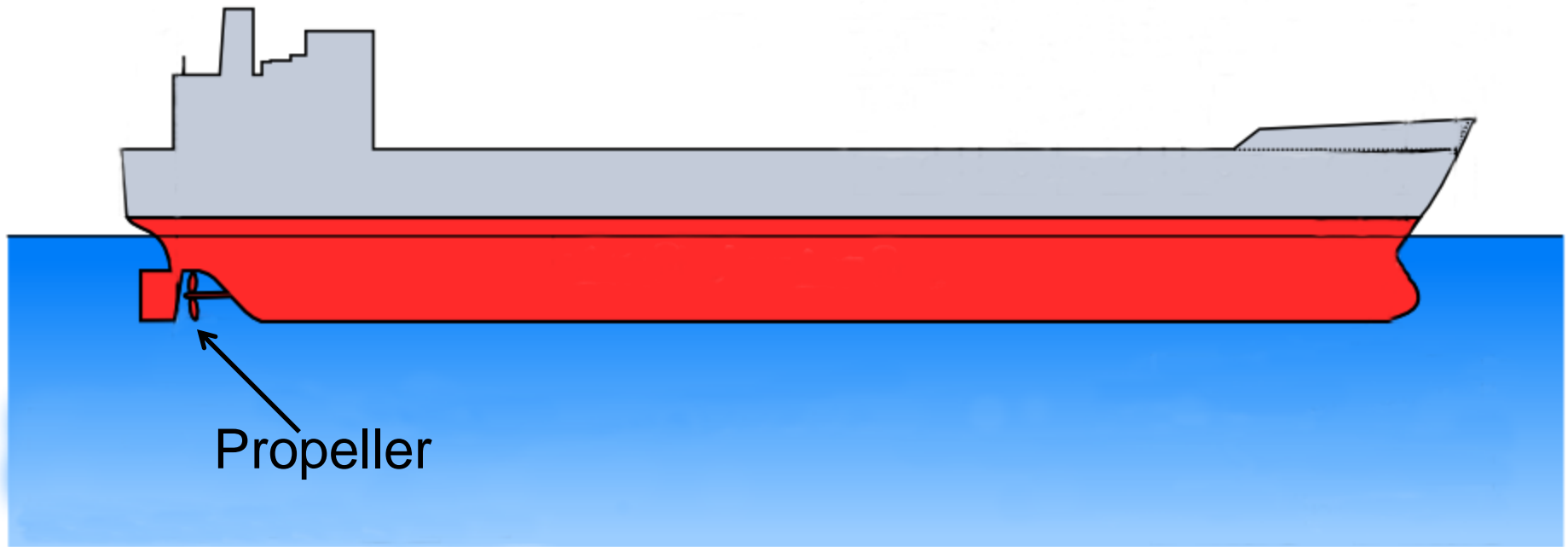
[Main index](#)

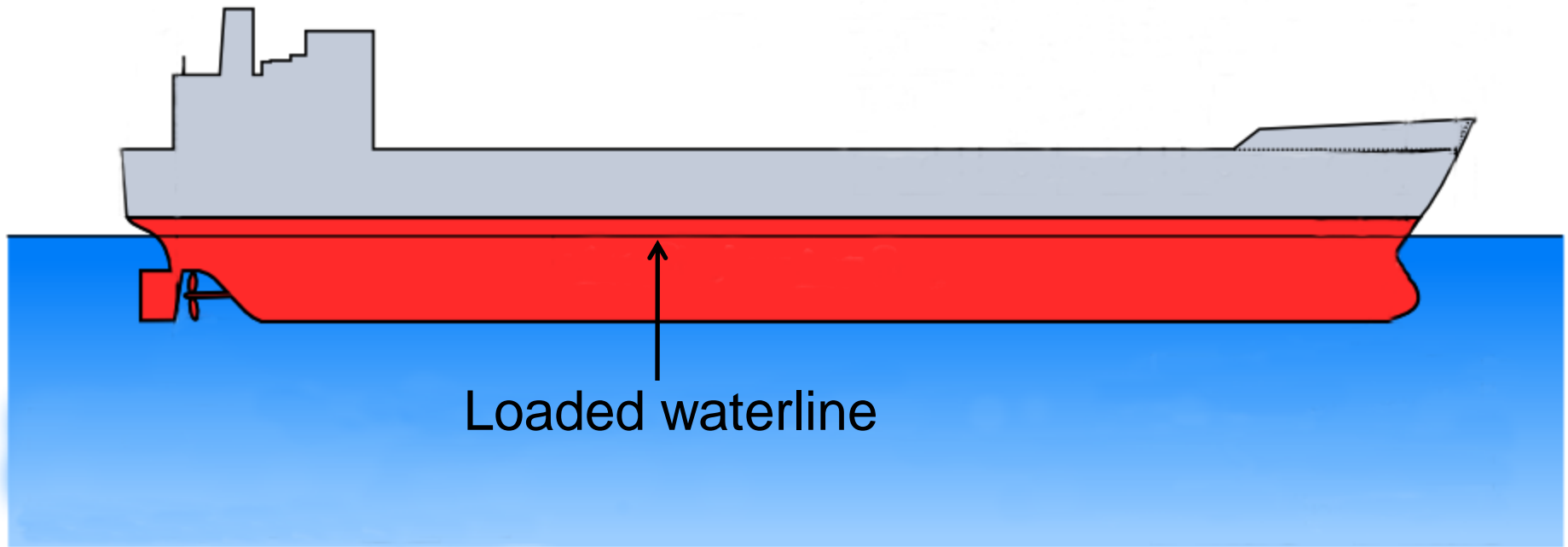




Rudder

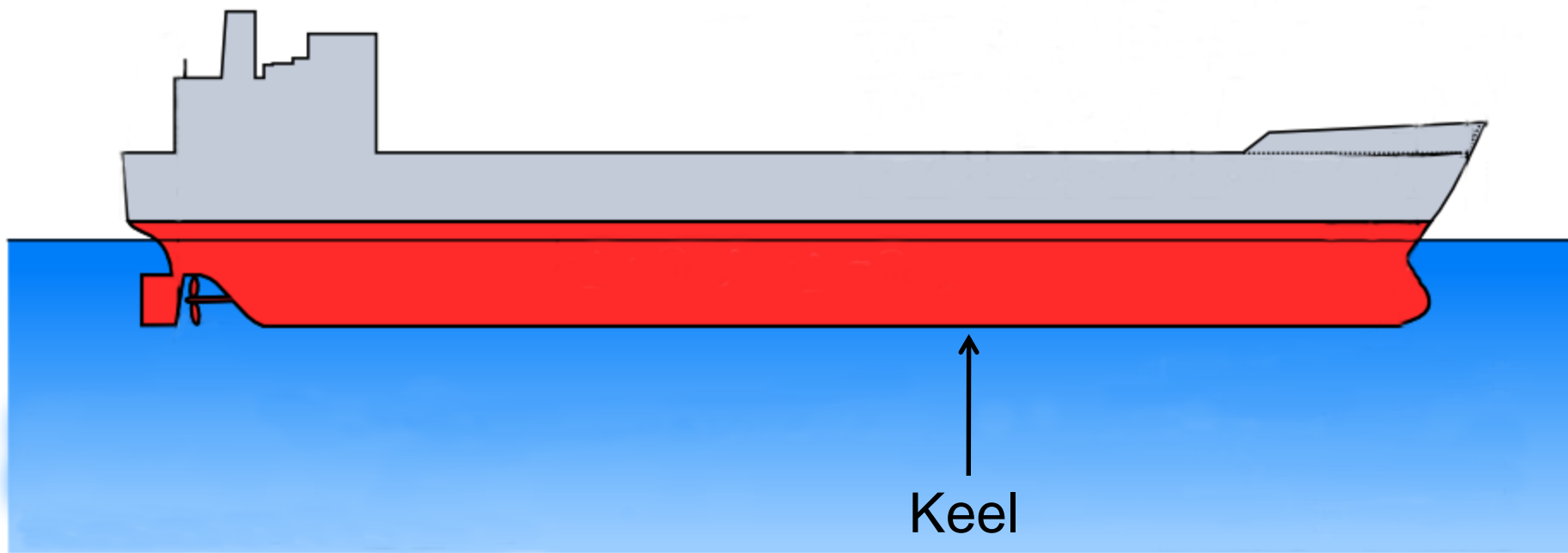
[Main index](#)



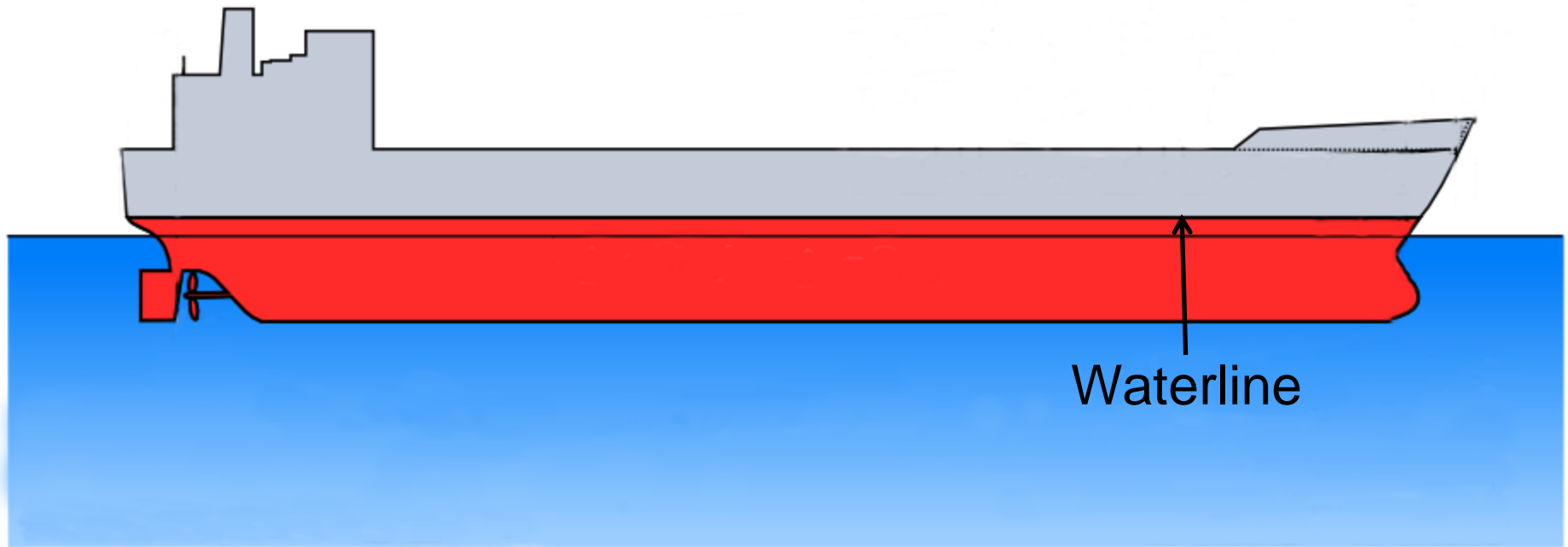


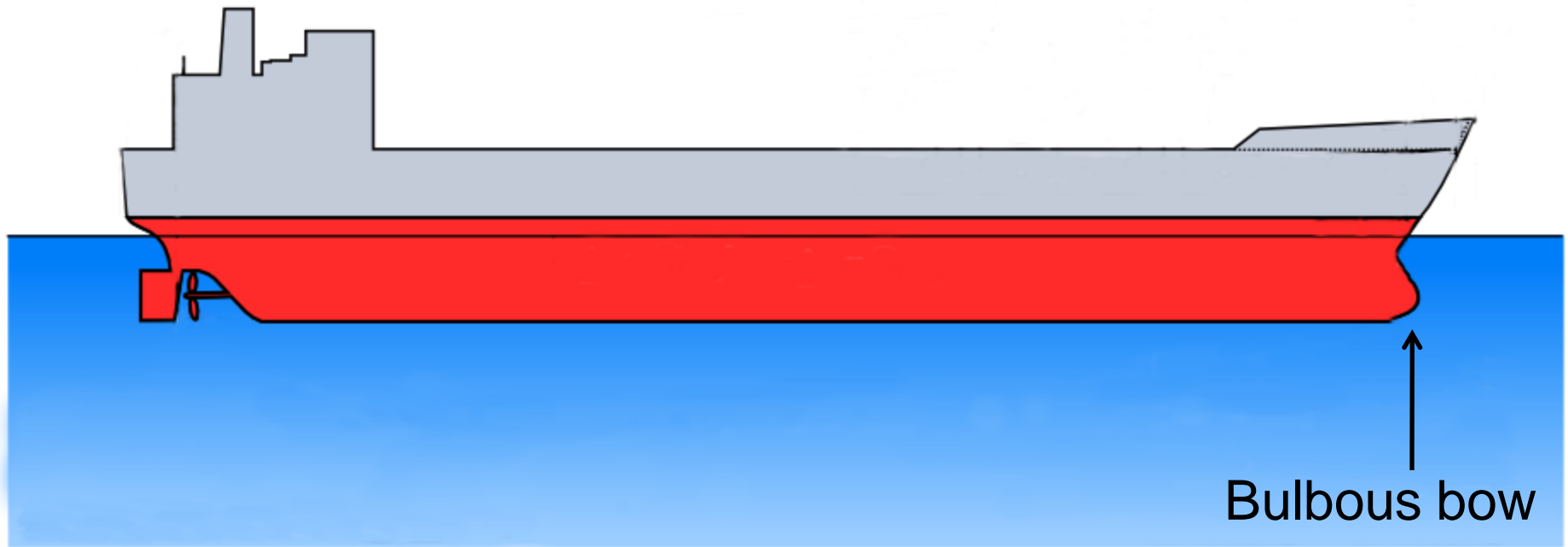
Loaded waterline

[Main index](#)

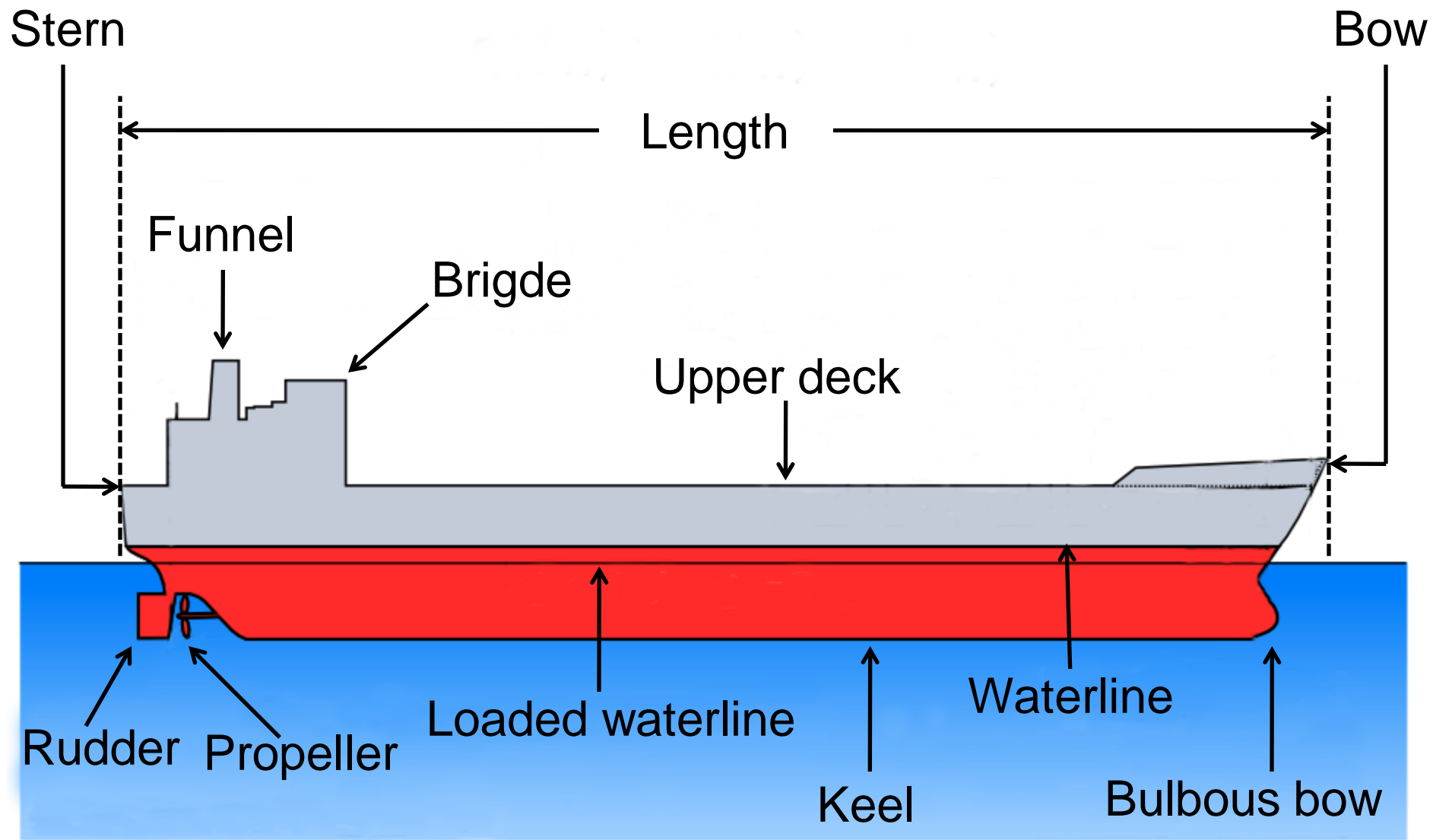


[Main index](#)



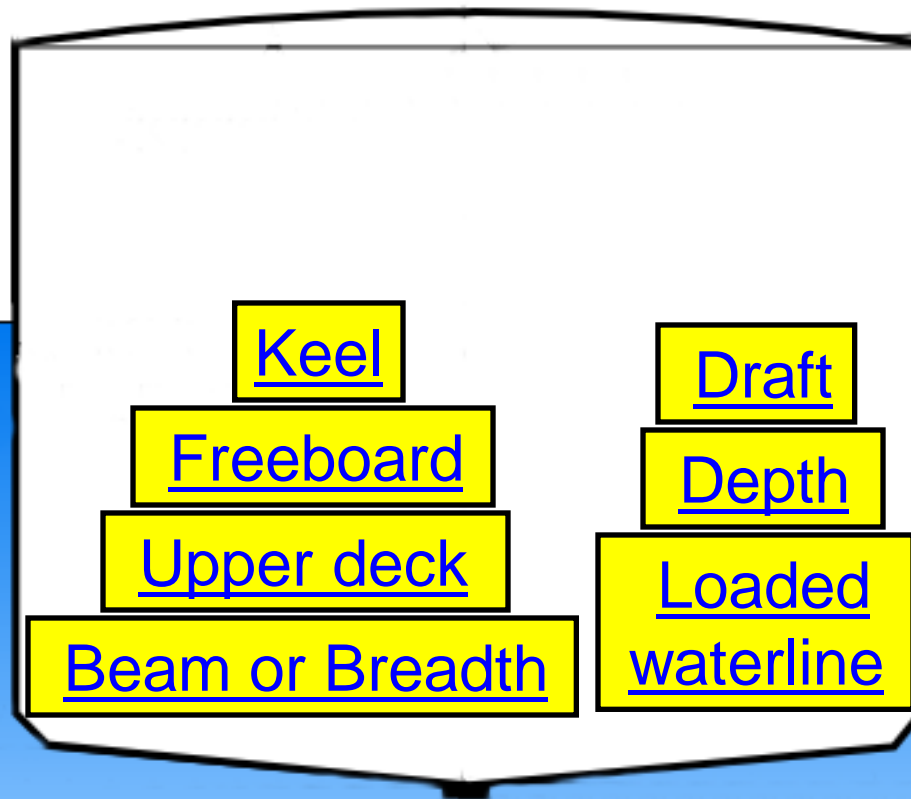


[Main index](#)



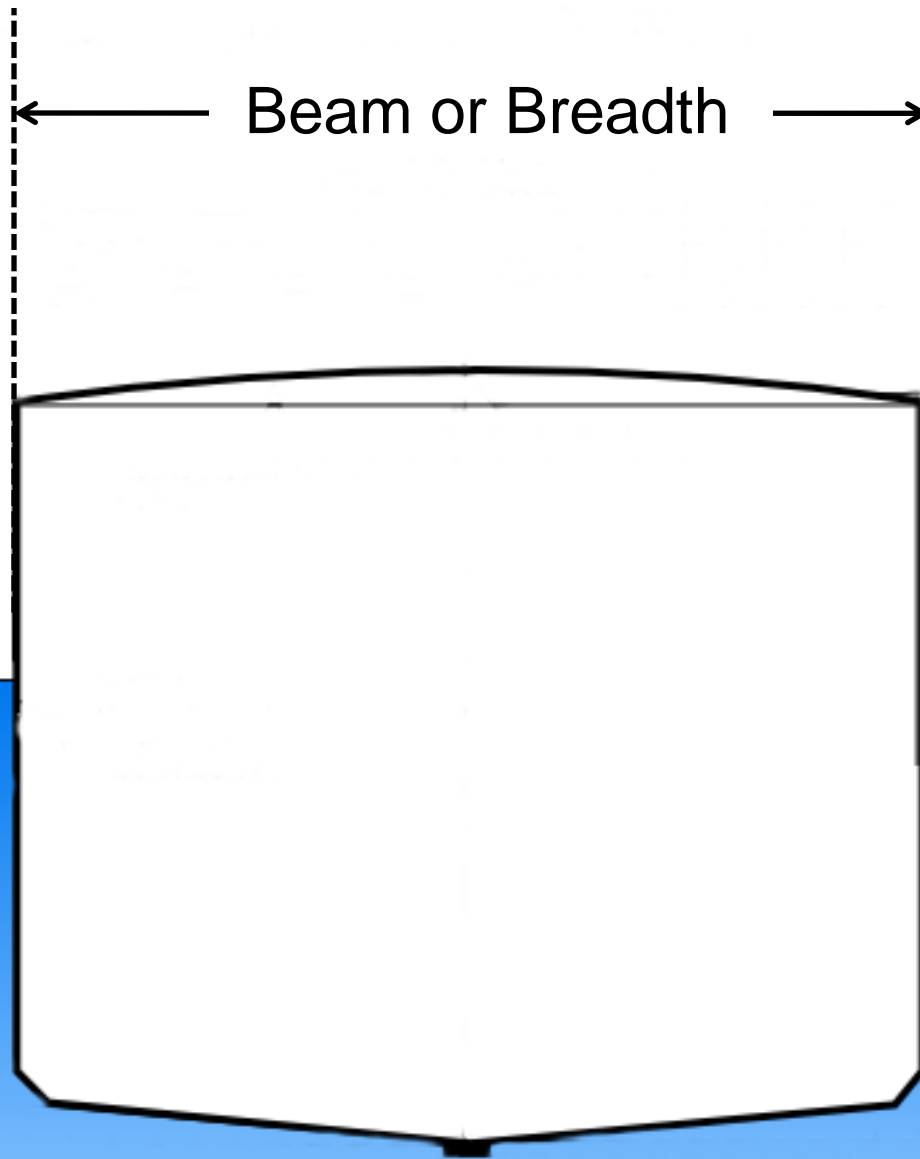
[Side view index](#)

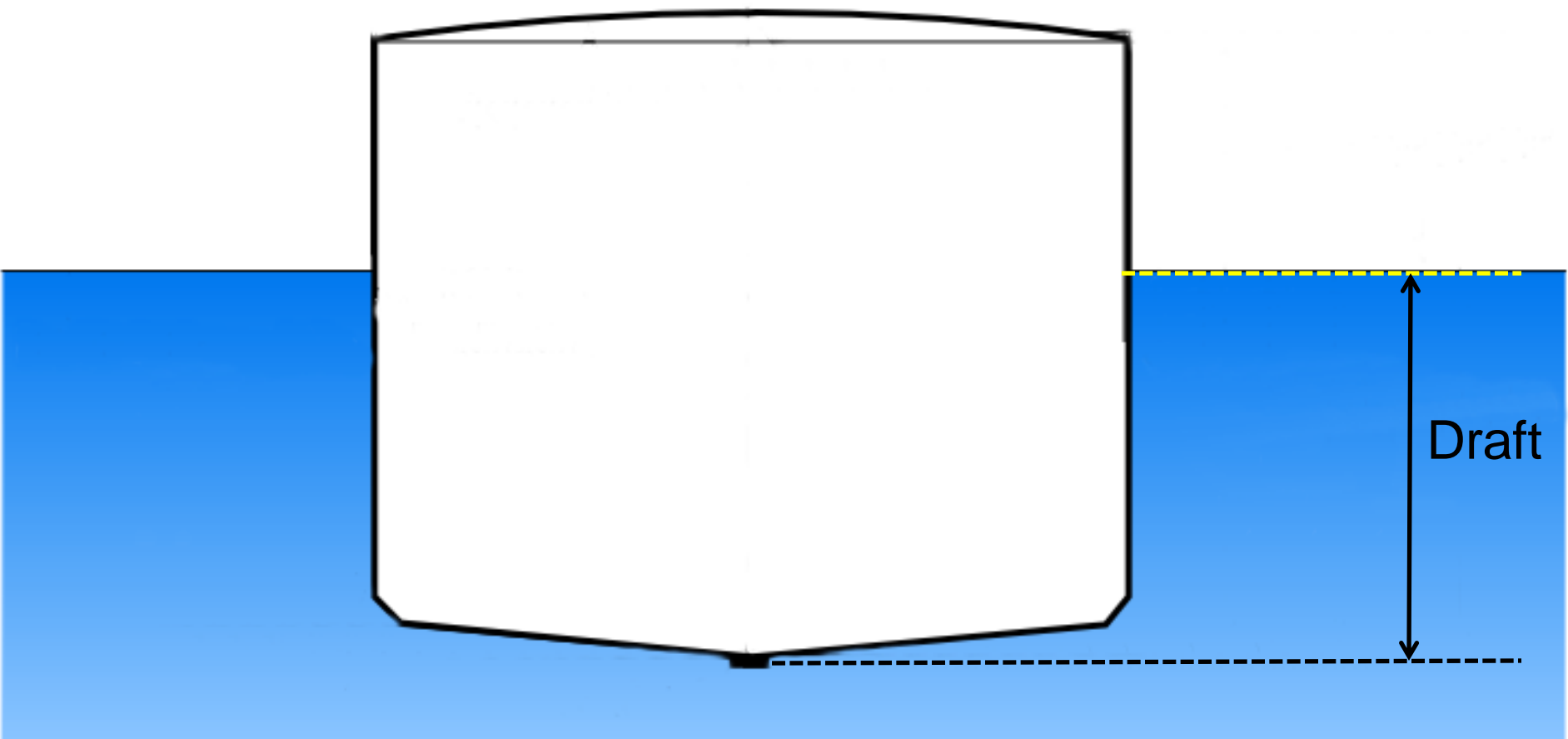
[Main index](#)

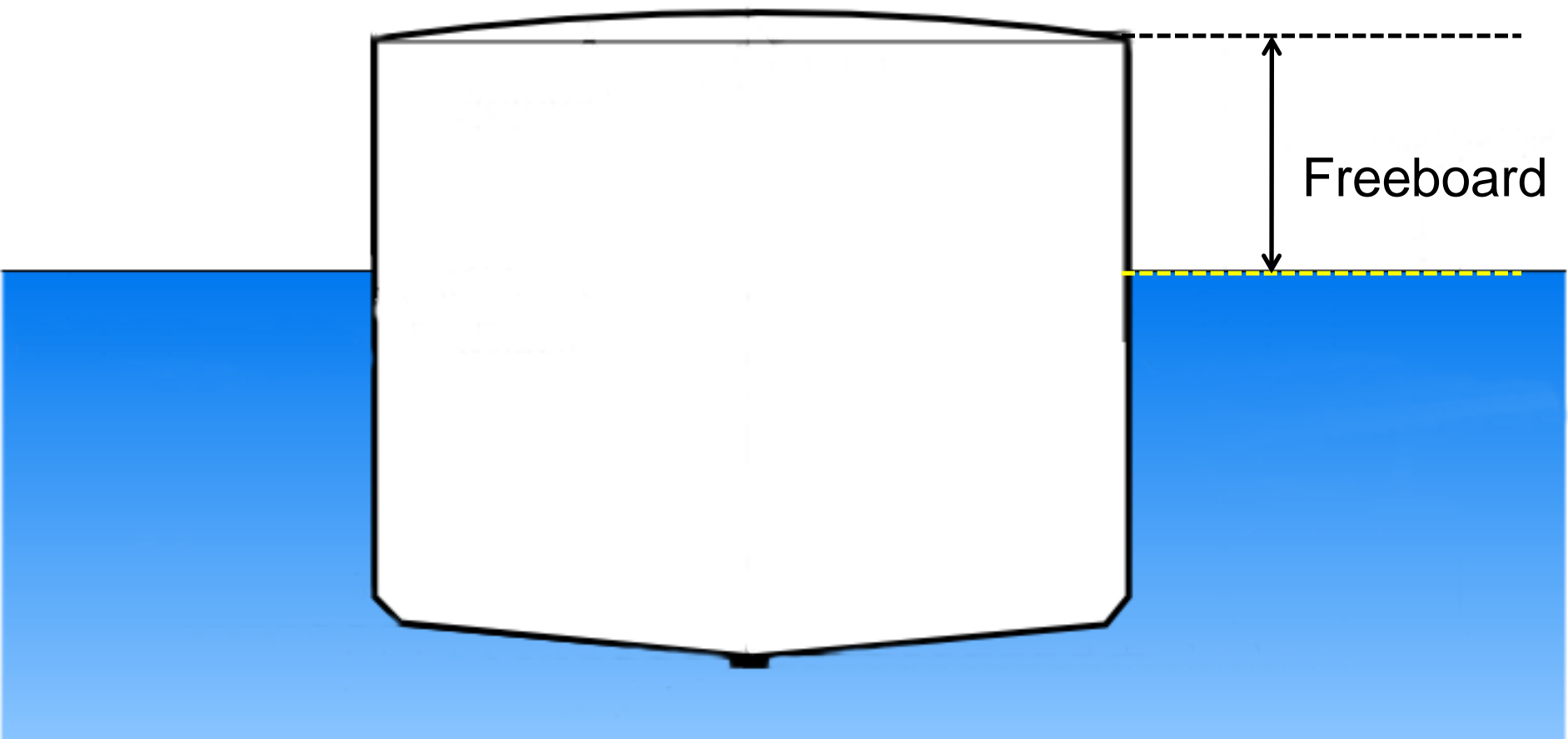


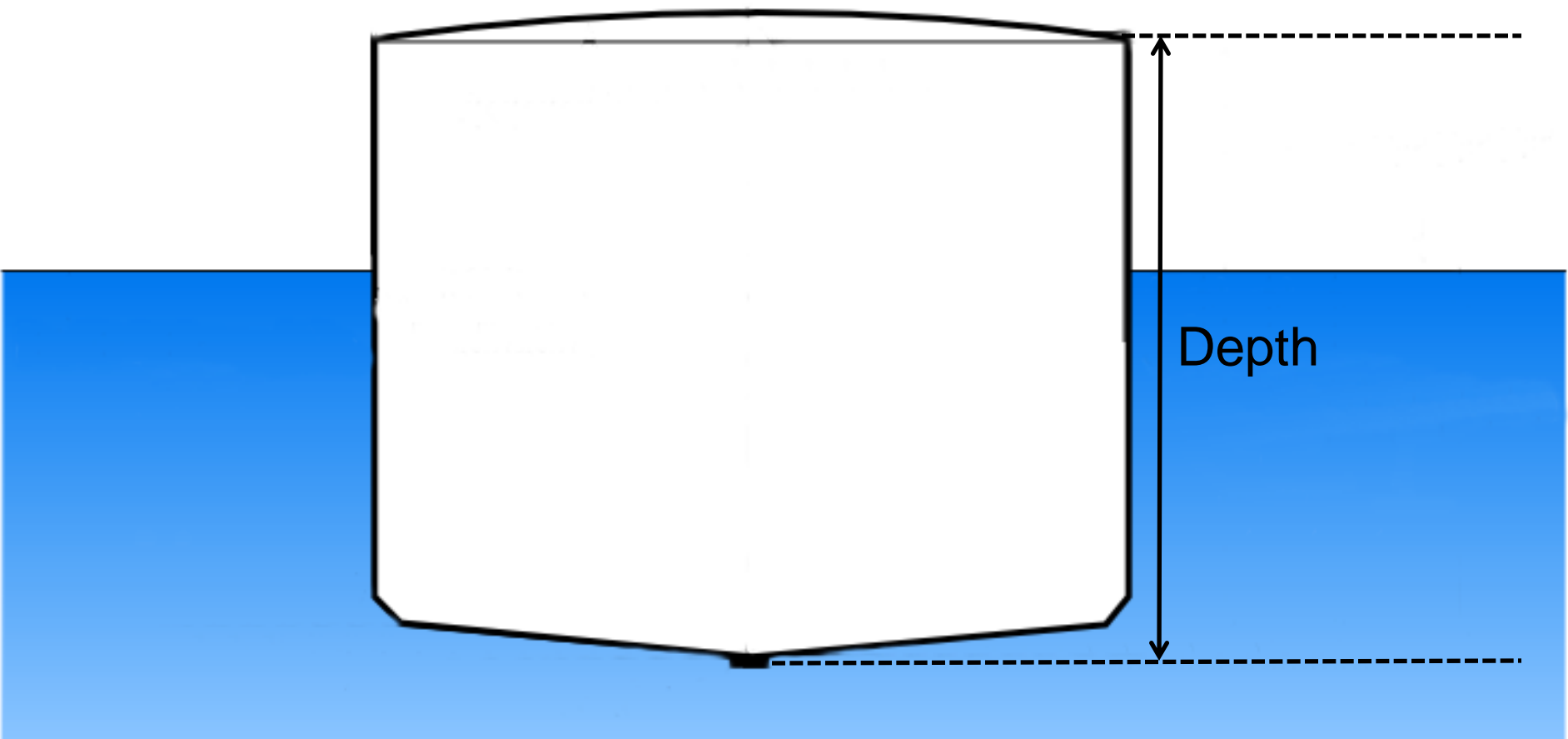
All in one

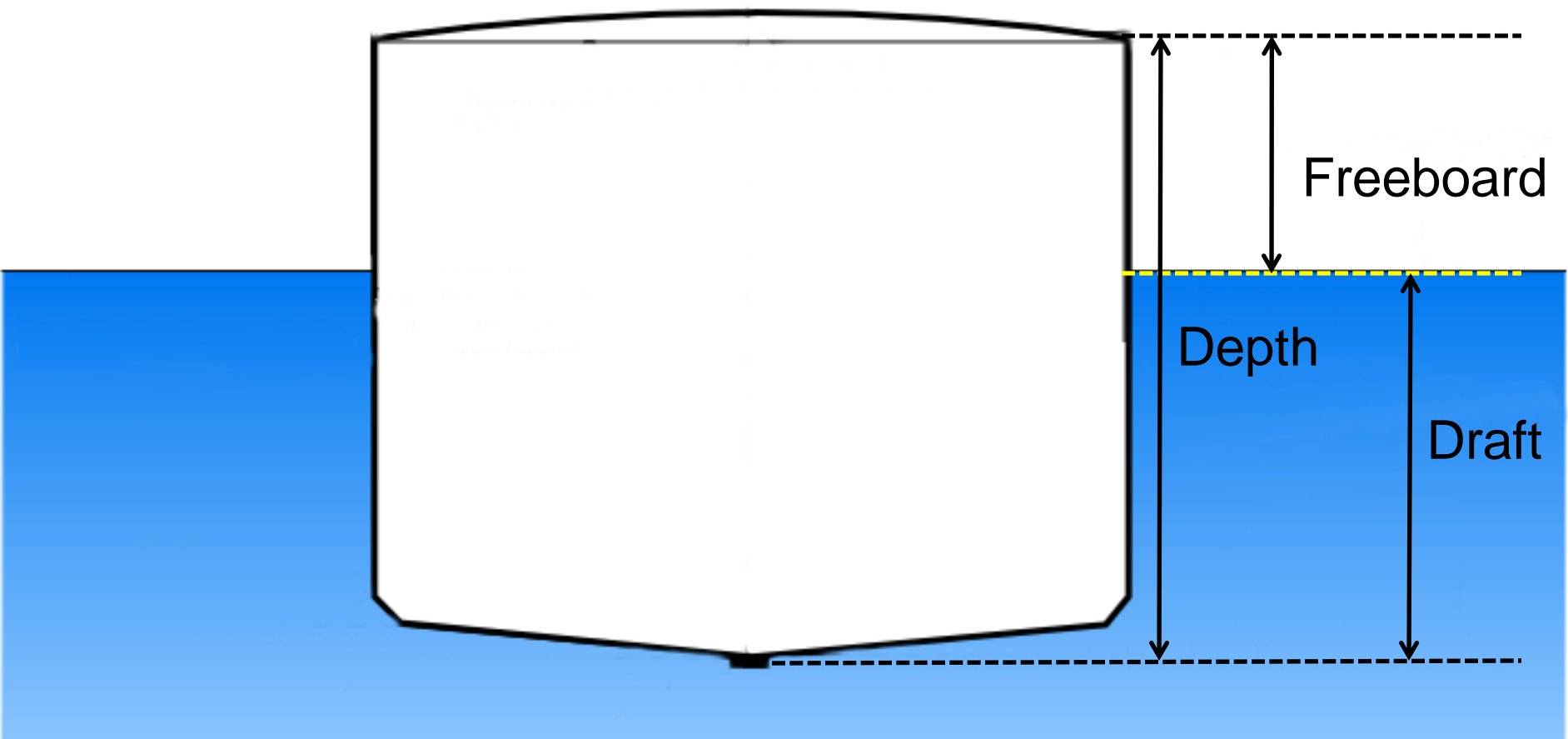
Main index

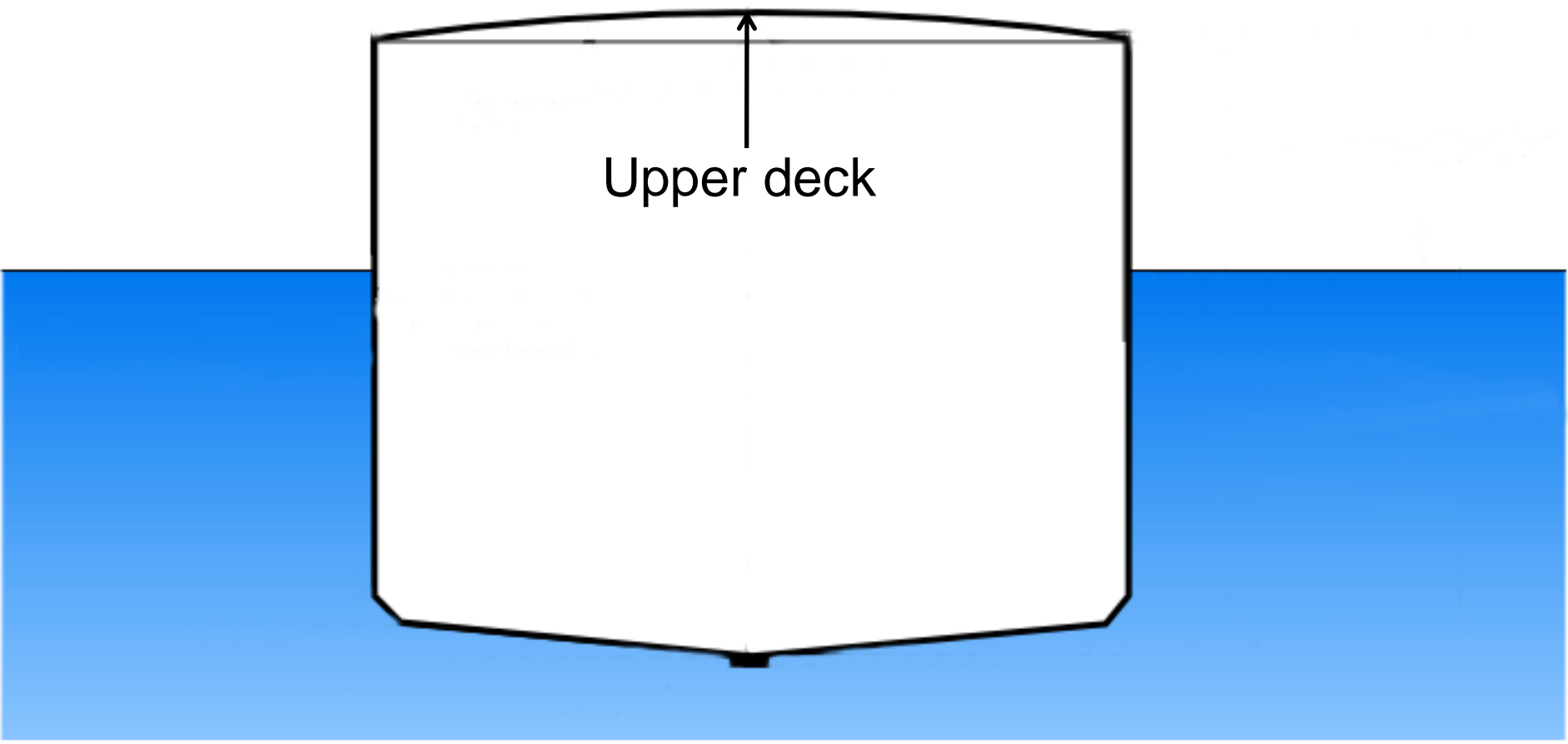








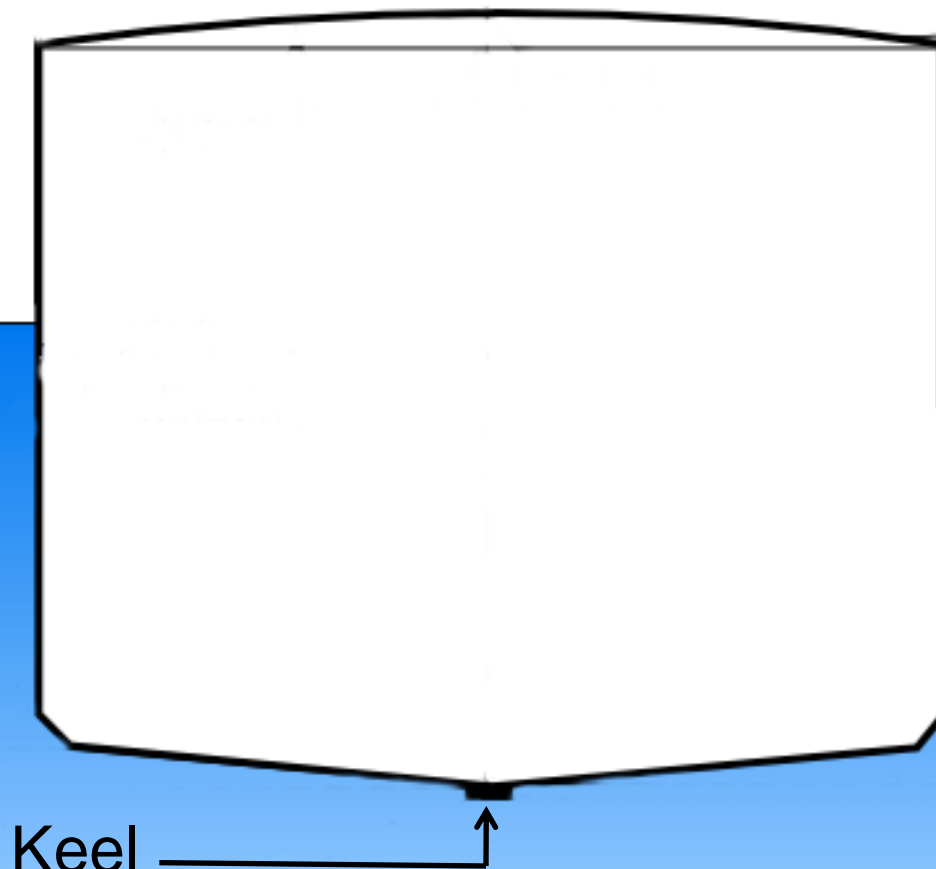




A diagram showing a cross-section of a ship's hull floating in water. The hull is white with a black outline. The water is represented by a blue area at the bottom. An arrow points from the text 'Upper deck' to the top edge of the hull.

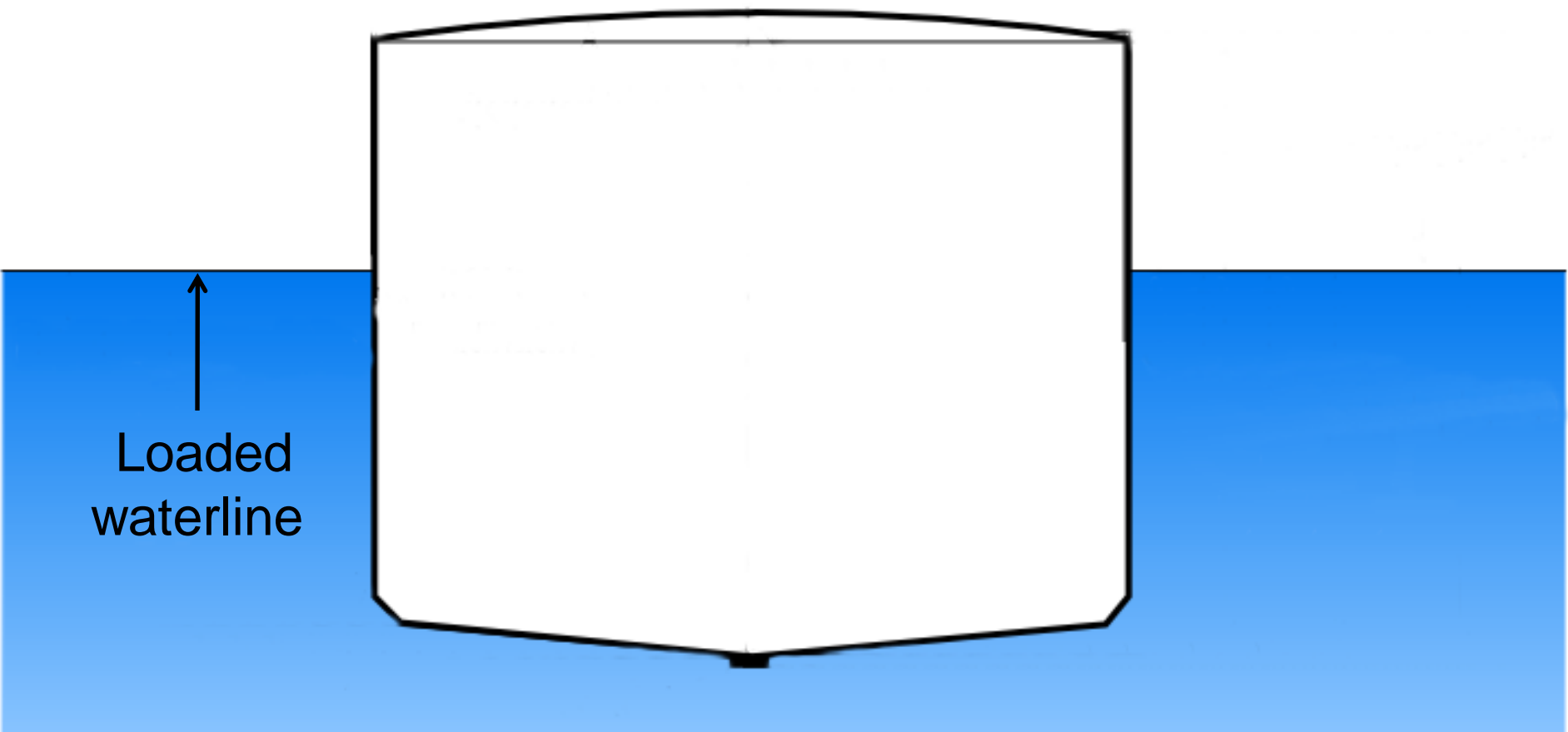
Upper deck

[Main index](#)



Keel

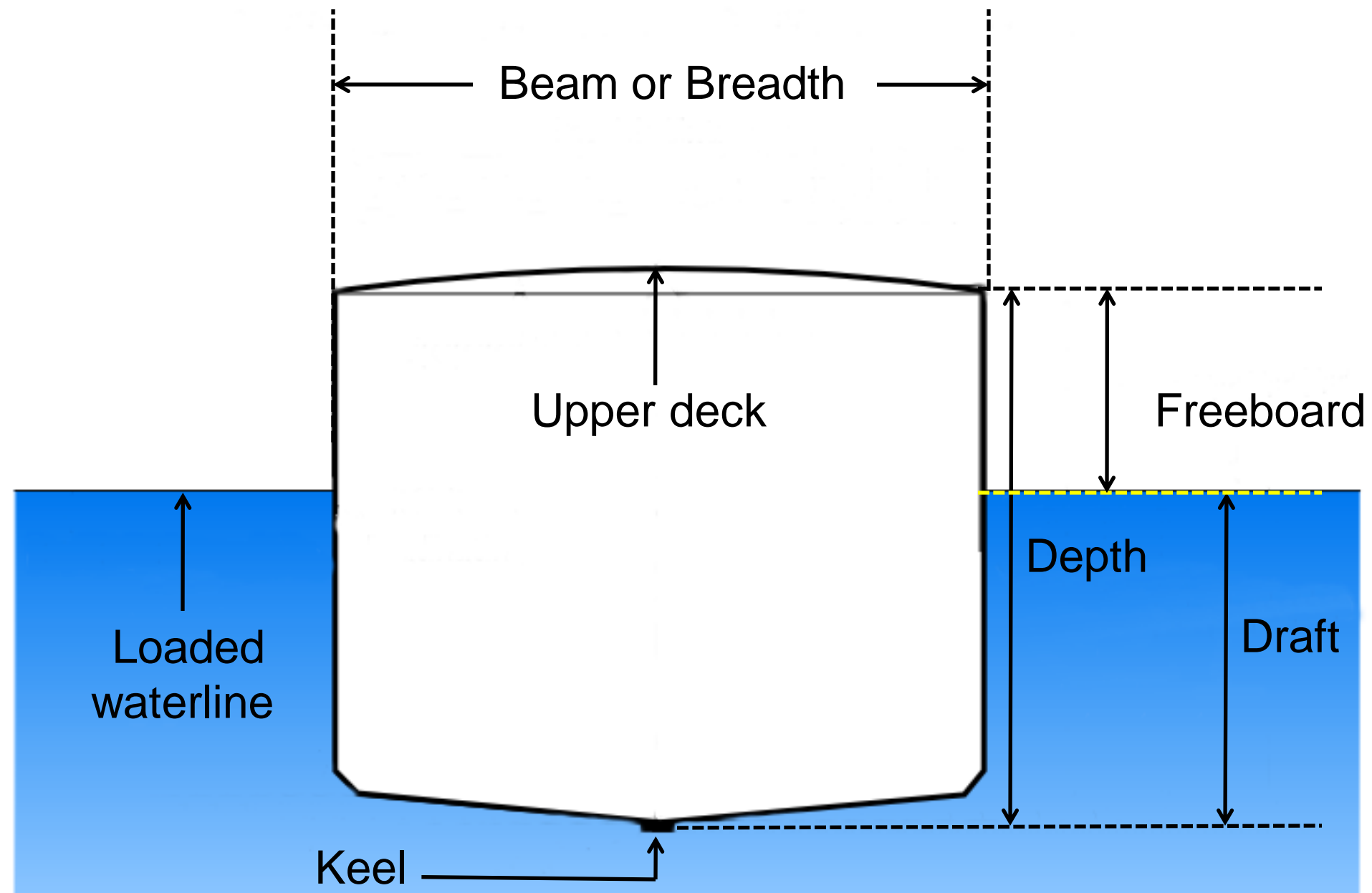
[Main index](#)



A diagram showing a white ship's hull floating in blue water. The hull has a curved bottom and a flat top. The water level is indicated by a horizontal line. An arrow points from the text 'Loaded waterline' to this line.

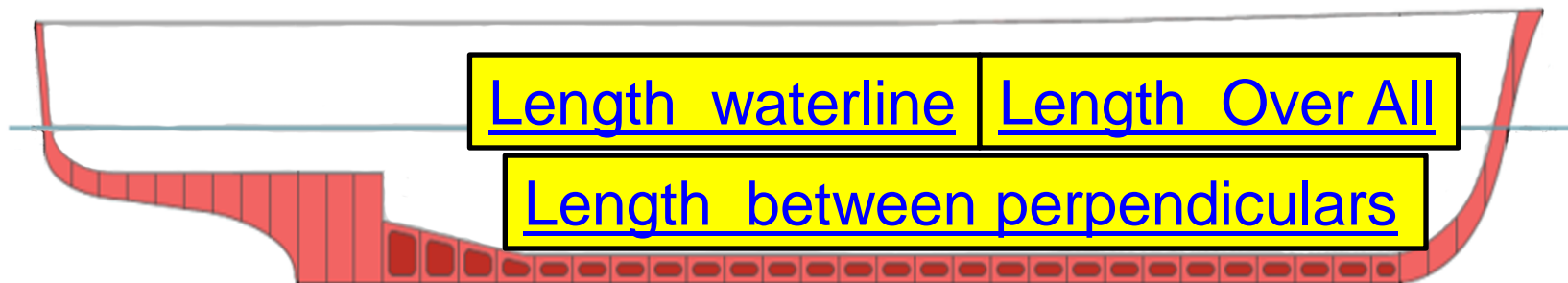
Loaded
waterline

[Main index](#)



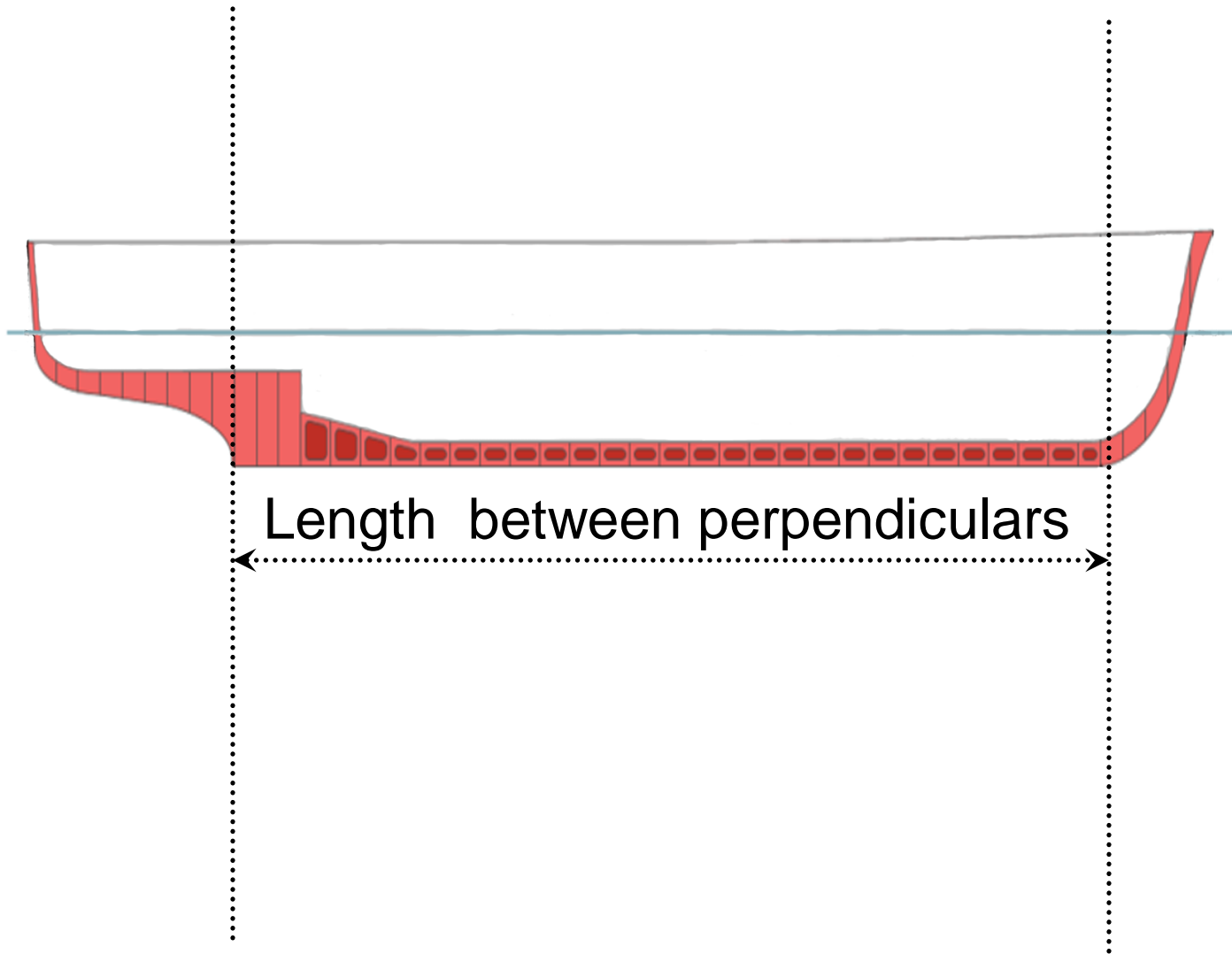
Front view index

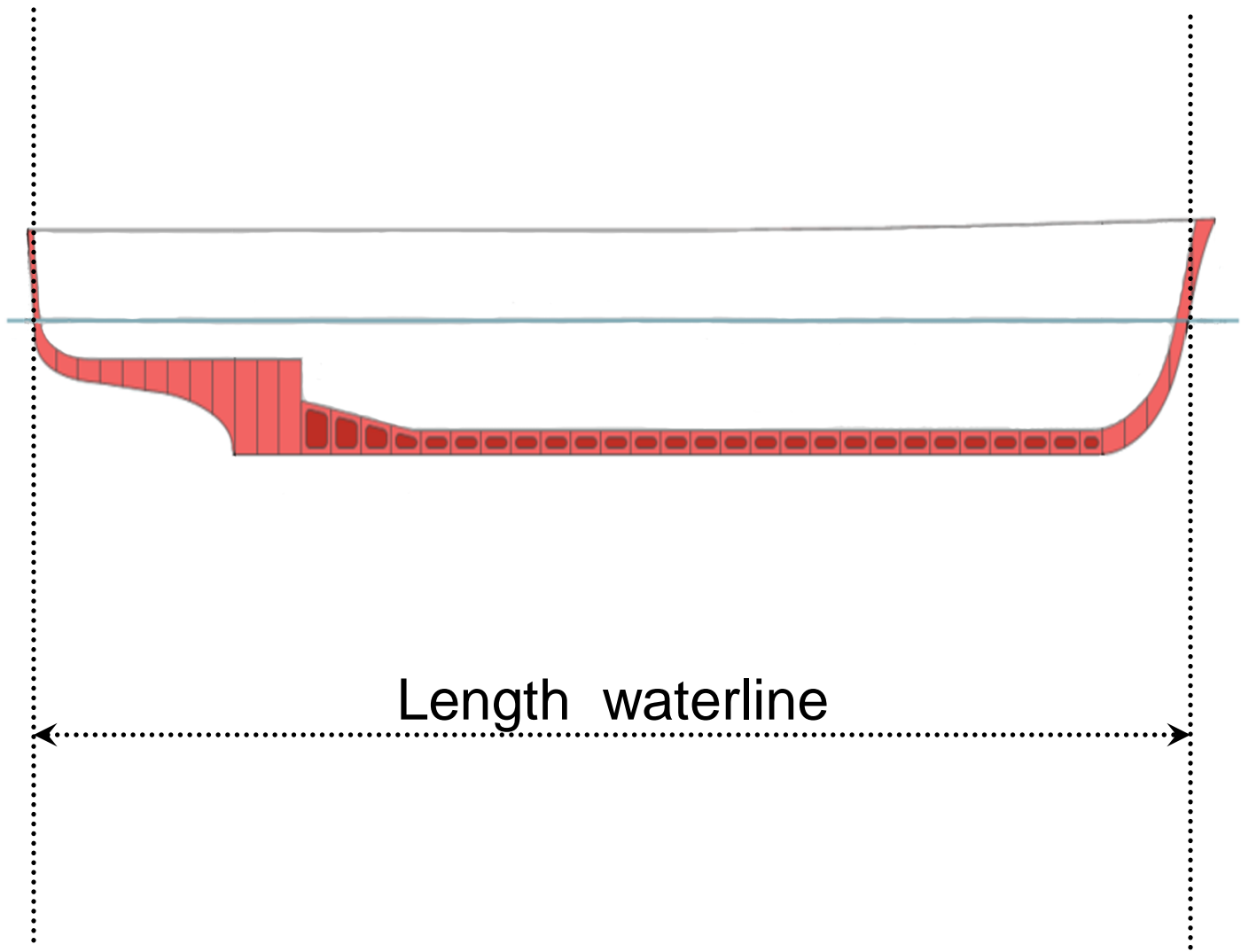
[Main index](#)

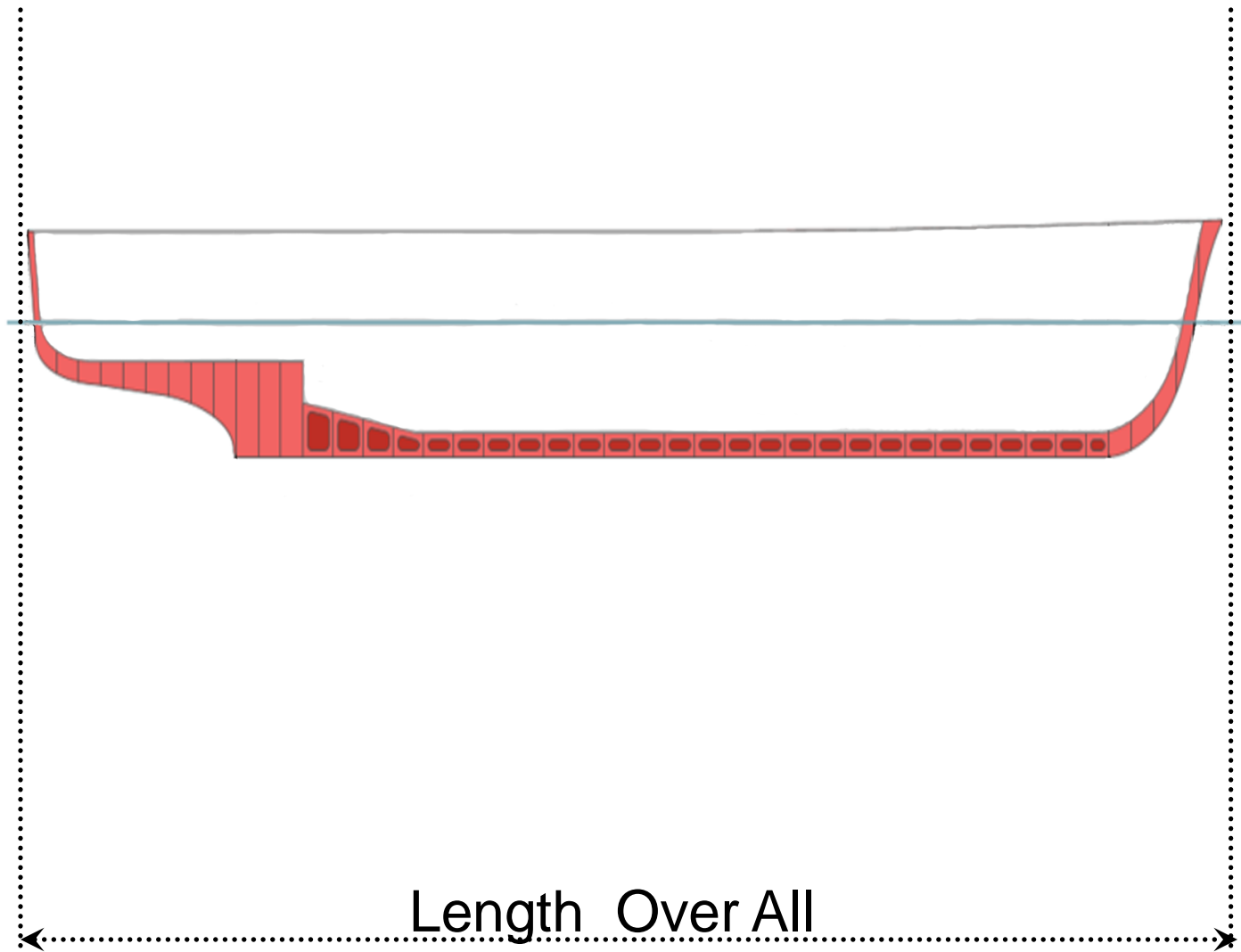


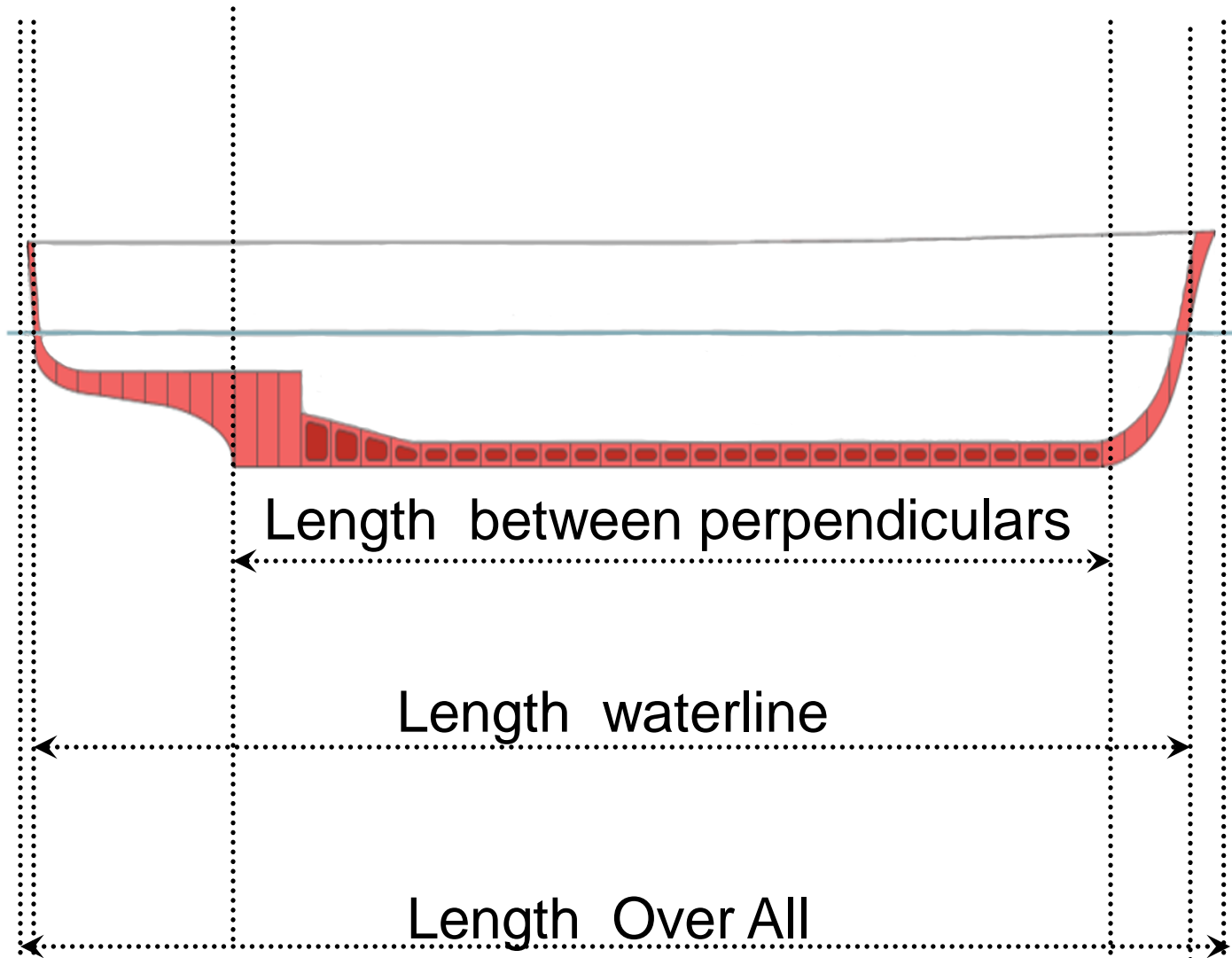
All in one

Main index









Length measurements index

[Main index](#)

Photo gallery

- [LNG & LPG tankers](#)
- [Chemical tankers \(ChT\)](#)
- [Very Large Crude Carriers \(VLCC\)](#)
- [Ultra Large Crude Carriers \(ULCC\)](#)
- A lot of photos can be found at:
<http://www.aukevisser.nl/>

LNG & LPG tankers

[Main index](#)

[ChT](#), [VLCC](#), [ULCC](#)



Chemical tankers

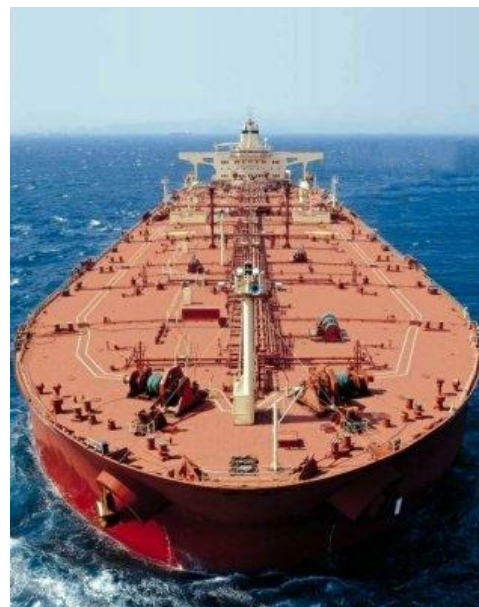
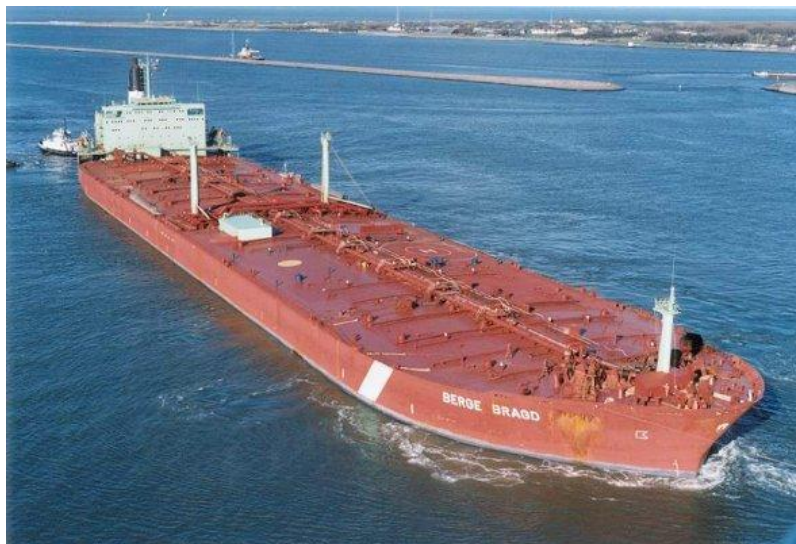
[Main index](#)

[LNG & LPG](#), [VLCC](#), [ULCC](#)



Very Large Crude Carriers (VLCC) [Main index](#)

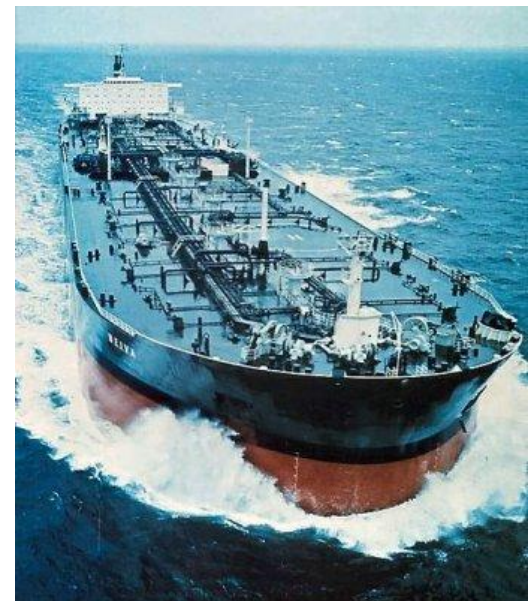
[LNG & LPG](#), [ChT](#), [ULCC](#)



Ultra Large Crude Carriers (ULCC)

[Main index](#)

[LNG & LPG](#), [ChT](#), [VLCC](#)



Credits

Pictures used to show ship terms:

- Adapted from [http://commons.wikimedia.org/wiki/File:Ship_size_\(side_view\).PNG](http://commons.wikimedia.org/wiki/File:Ship_size_(side_view).PNG)
- Adapted from http://en.wikipedia.org/wiki/File:Ship_length_measurements.png
- Adapted from [http://commons.wikimedia.org/wiki/File:Ship_size_\(front_view\).PNG](http://commons.wikimedia.org/wiki/File:Ship_size_(front_view).PNG)

Photos

- LNG Rivers from http://en.wikipedia.org/wiki/File:Methanier_aspher_LNGRIVERS.jpg
- Other from Dr. Felipe Antelo González's web page: <http://ingenieriamaritima.spaces.live.com>

[Main index](#)

Author	Moisés Canle, M. Isabel Fernández, M. Victoria García & J. Arturo Santaballa
Title	Ship terms
Classification	Chemistry
Keywords	ukoer, maritime transportation, chemistry
Description	Material for personal study
Creative Commons Licence (url)	http://creativecommons.org/licenses/by-nc-sa/2.0/uk/
Language	English
File size	1.4 MB
File format	pdf
Notes	Some images have been downloaded from Internet, when required corresponding credits are mentioned. Thanks are given to those sites allowing free use. There is no intention of unauthorized use of any material, so if, by mistake, copyright protected images appear, they will be withdrawn upon request.